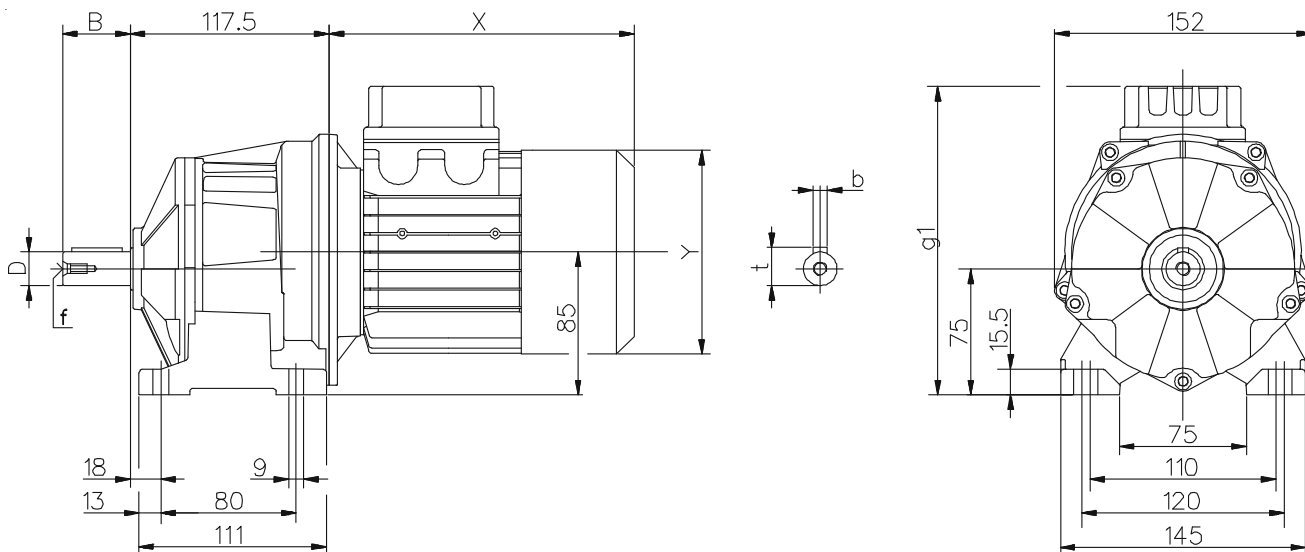
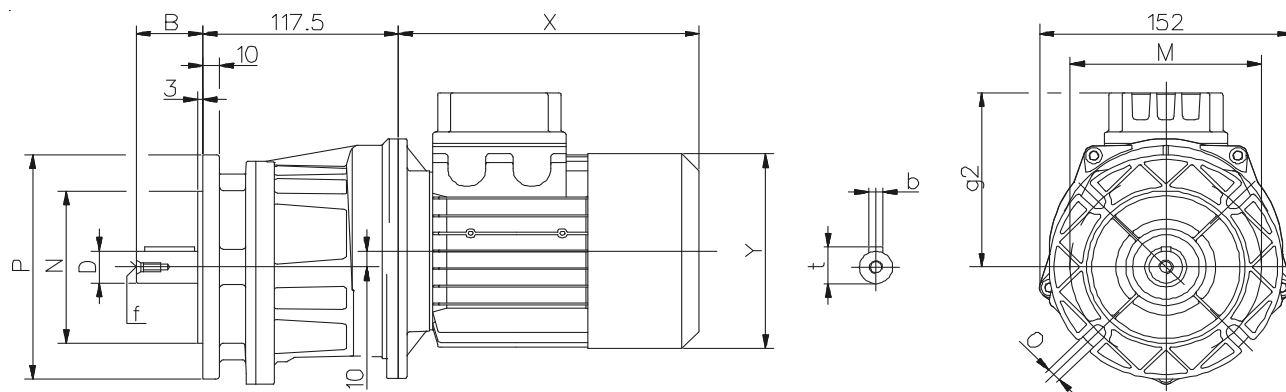

**A32**
**Dimensioni / Dimensions / Abmessungen / Encombremets / Dimensiones**
**CH**

**CH...F**


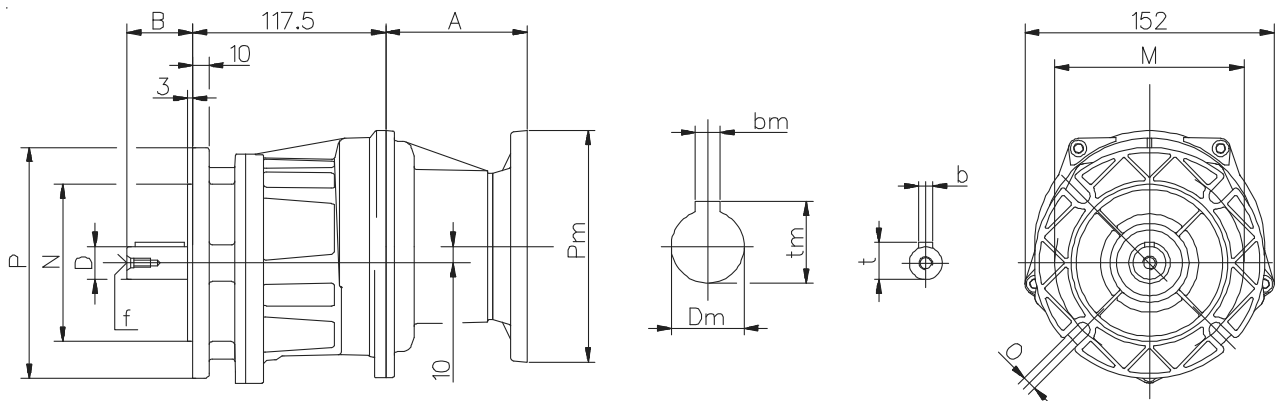
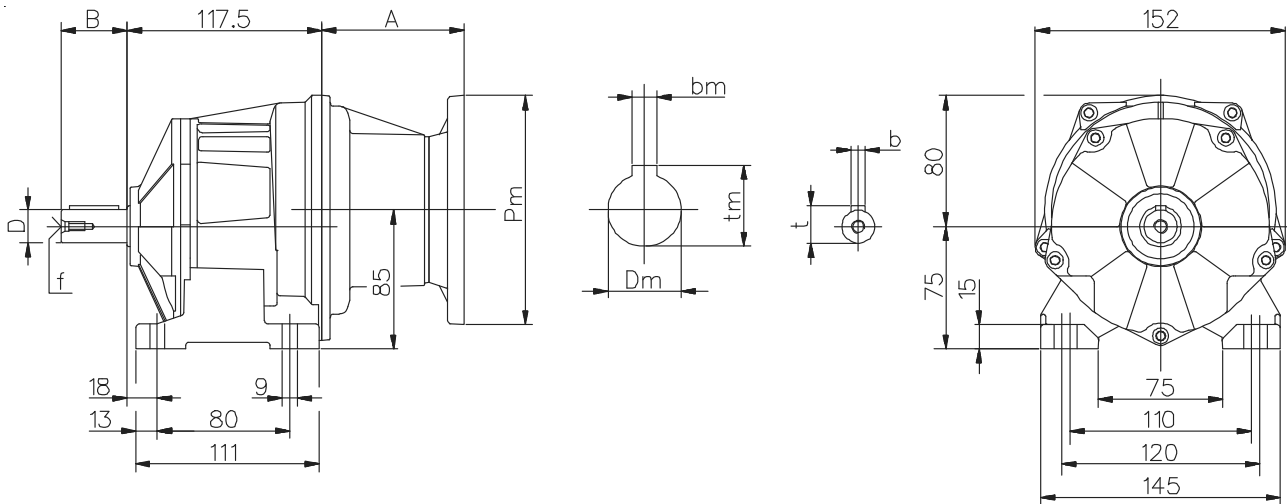
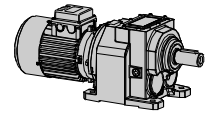
Alberi / Shaft / Wellen / Arbres / Ejes				
D j6	B	b	t	f
<b>20</b>	40	6	22,5	M6
<b>(16)</b>	(40)	(5)	(18)	(M6)
<b>(14)</b>	(30)	(5)	(16)	(M6)

Flange / Flanges / Flansche / Flasques / Bridas			
P	M	N f8	O
<b>140</b>	115	95	9
<b>(120)</b>	(100)	(80)	(9)
-	-	-	-

<b>A32</b>	Motore normale / Standard motor / Normaler Motor / Moteur normal Motor normal					Motore autofrenante / Brake motor / Bremsmotor / Moteur frein Motor-freno				
	g1	g2	X	Y	~Kg	g1	g2	X	Y	~Kg
<b>63</b>	189	114	180	121	7,5	204	129	238	121	8,8
<b>71</b>	197	122	205	139	9,3	213	138	269	139	11,2
<b>80</b>	207	132	223	158	13,3	222	147	294	158	16,4

(..) Solo su richiesta  
 (..) Only on request  
 (..) Auf Wunsch  
 (..) Seulement sur demande  
 (..) Sólo bajo pedido

- Peso comprensivo di motore  
 - Weight with motor  
 - Gewicht mit Motor  
 - Poids avec moteur  
 - Peso con motor



Alberi / Shaft / Wellen / Arbres / Ejes				
D j6	B	b	t	f
20	40	6	22,5	M6
(16)	(40)	(5)	(18)	(M6)
(14)	(30)	(5)	(16)	(M6)

Flange / Flanges / Flansche / Flasques / Bidas			
P	M	N f8	O
140	115	95	9
(120)	(100)	(80)	(9)
-	-	-	-

PAM	A	kg
063	55	4.8
071	55	4.9
080	86	5.2

- Peso senza motore (..) Solo su richiesta
- Weight without motor (..) Only on request
- Gewicht ohne Motor (..) Auf Wunsch
- Poids sans moteur (..) Seulement sur demande
- Peso sin motor (..) Sólo bajo pedido

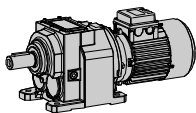
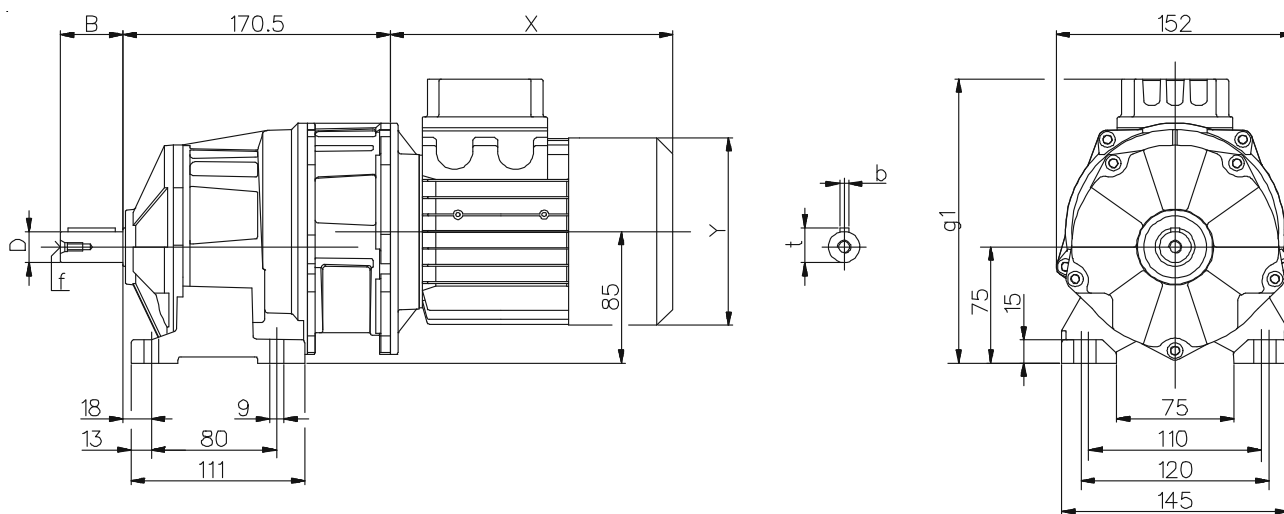
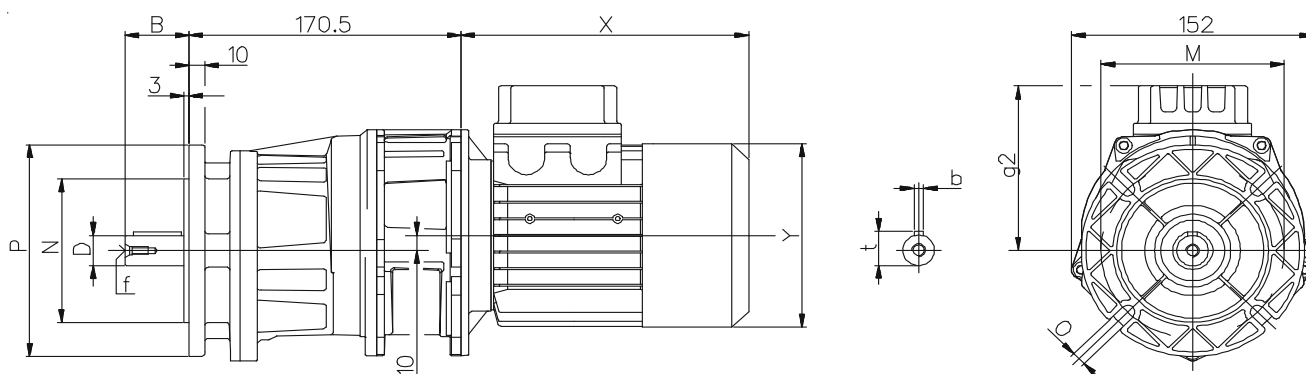
Per le dimensioni relative alla zona attacco motore (Pm, Dm, bm, tm) fare riferimento alla tabella di pag. 134.

For the dimensions concerning the motor connection area (Pm, Dm, bm, tm) please refer to the table shown at page 134.

Zu den Abmessungen des Motoranschlußflansches (Pm, Dm, bm, tm) siehe Tabelle auf Seite 134.

Pour les dimensions concernant la zone de montage du moteur (Pm, Dm, bm, tm) lire SVP le tableau à la page 134.

Para las magnitudes correspondientes a la zona del motor (Pm, Dm, bm, tm) consulte la tabla de la página 134.


**A33**
**Dimensioni / Dimensions / Abmessungen / Encombremets / Dimensiones**
**CH**

**CH...F**


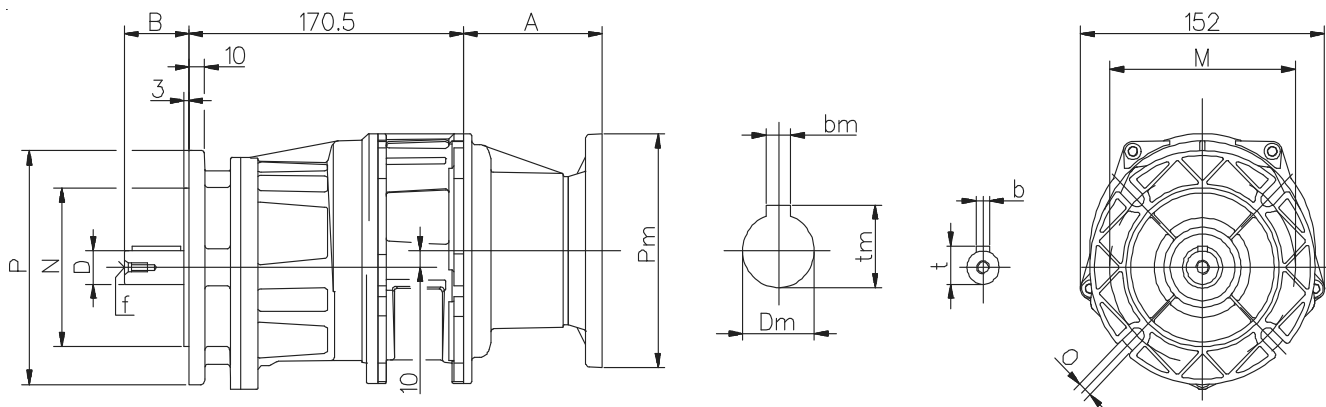
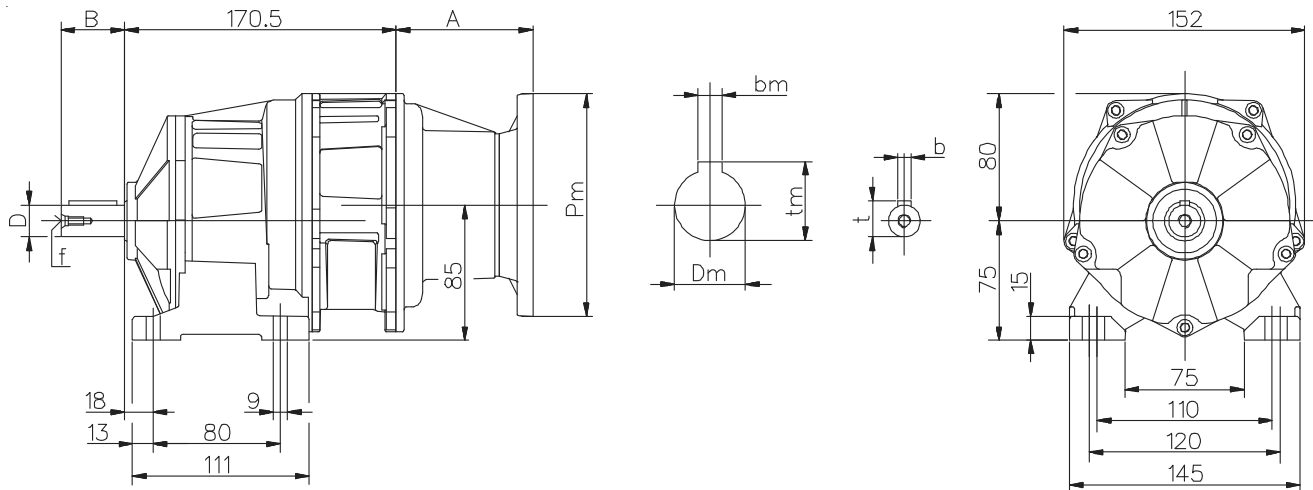
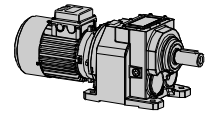
Alberi / Shaft / Wellen / Arbres / Ejes				
D j6	B	b	t	f
20	40	6	22,5	M6
(16)	(40)	(5)	(18)	(M6)
(14)	(30)	(5)	(16)	(M6)

Flange / Flanges / Flansche / Flasques / Bridas			
P	M	N f8	O
140	115	95	9
(120)	(100)	(80)	(9)
-	-	-	-

A33	Motore normale / Standard motor / Normaler Motor / Moteur normal Motor normal					Motore autofrenante / Brake motor / Bremsmotor / Moteur frein Motor-freno				
	g1	g2	X	Y	~Kg	g1	g2	X	Y	~Kg
63	189	114	180	121	8,6	204	129	238	121	9,9
71	197	122	205	139	10,5	213	138	269	139	12,4
80	207	132	223	158	14,5	222	147	294	158	17,6

(..) Solo su richiesta  
 (..) Only on request  
 (..) Auf Wunsch  
 (..) Seulement sur demande  
 (..) Sólo bajo pedido

- Peso comprensivo di motore  
 - Weight with motor  
 - Gewicht mit Motor  
 - Poids avec moteur  
 - Peso con motor



Alberi / Shaft / Wellen / Arbres / Ejes				
D j6	B	b	t	f
20	40	6	22,5	M6
(16)	(40)	(5)	(18)	(M6)
(14)	(30)	(5)	(16)	(M6)

Flange / Flanges / Flansche / Flasques / Bidas			
P	M	N f8	O
140	115	95	9
(120)	(100)	(80)	(9)
-	-	-	-

PAM	A	kg
063	55	5
071	55	5.1
080	86	6.2

- Peso senza motore                   (..) Solo su richiesta
- Weight without motor               (..) Only on request
- Gewicht ohne Motor                 (..) Auf Wunsch
- Poids sans moteur                 (..) Seulement sur demande
- Peso sin motor                       (..) Sólo bajo pedido

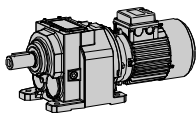
Per le dimensioni relative alla zona attacco motore (Pm, Dm, bm, tm) fare riferimento alla tabella di pag. 134.

For the dimensions concerning the motor connection area (Pm, Dm, bm, tm) please refer to the table shown at page 134.

Zu den Abmessungen des Motoranschlußflansches (Pm, Dm, bm, tm) siehe Tabelle auf Seite 134.

Pour les dimensions concernant la zone de montage du moteur (Pm, Dm, bm, tm) lire SVP le tableau à la page 134.

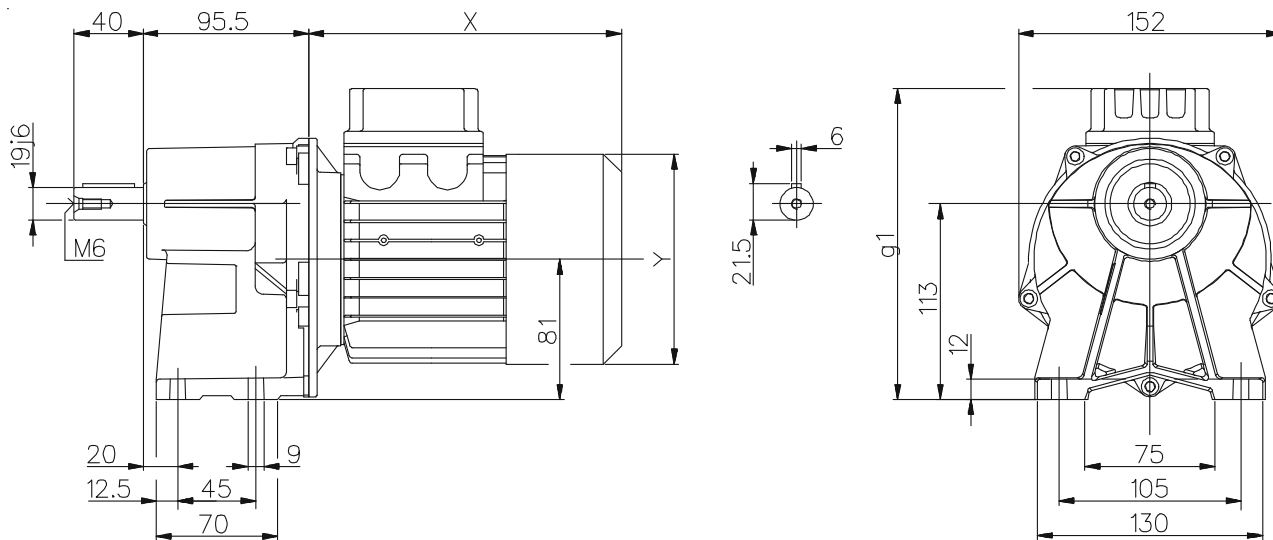
Para las magnitudes correspondientes a la zona del motor (Pm, Dm, bm, tm) consulte la tabla de la página 134.



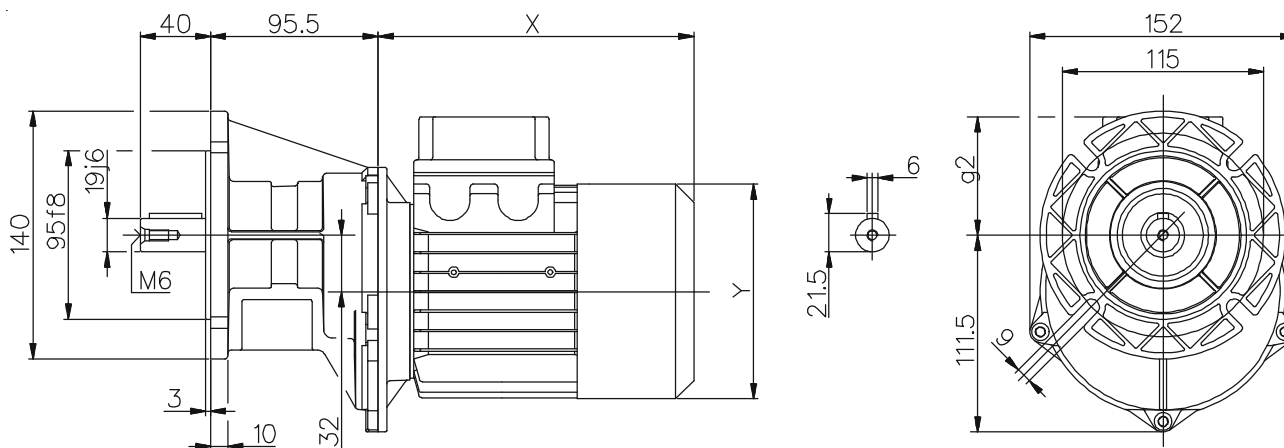
**A41**

**Dimensioni / Dimensions / Abmessungen / Encombremets / Dimensiones**

**CH**



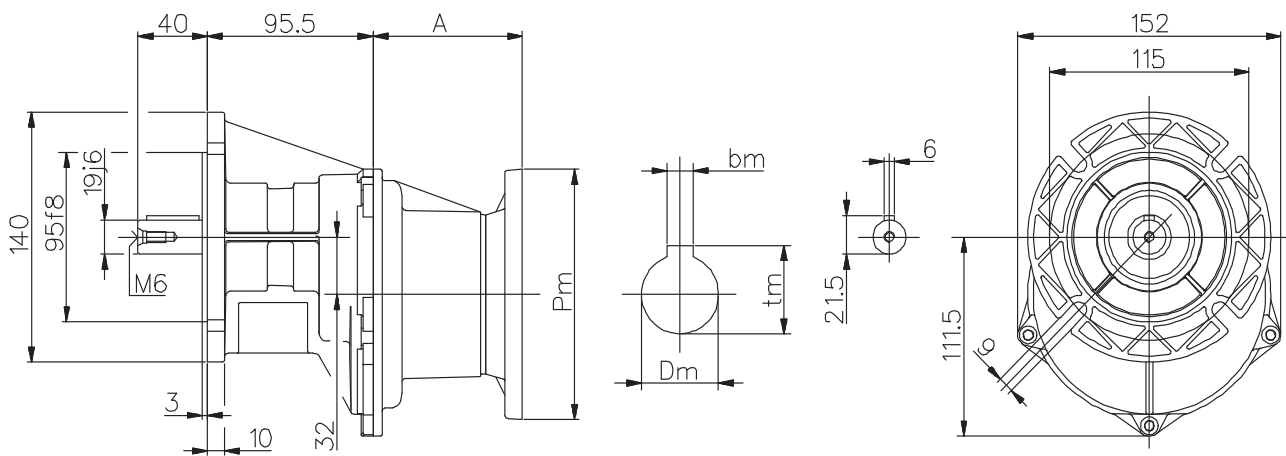
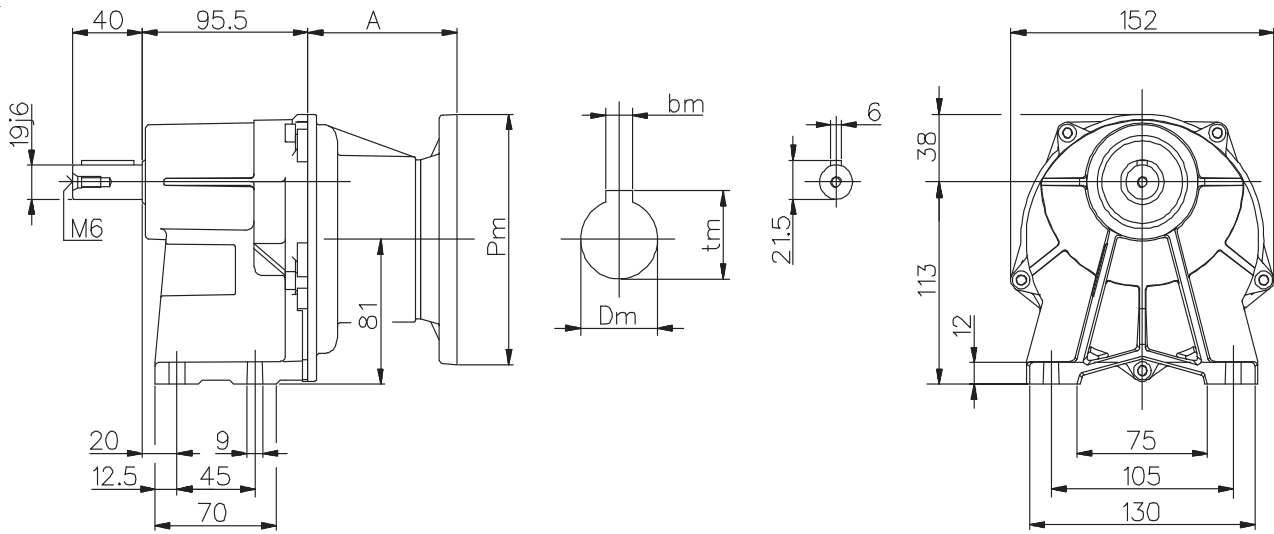
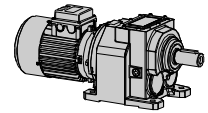
**CH...F**



A41	Motore normale / Standard motor / Normaler Motor / Moteur normal Motor normal					Motore autofrenante / Brake motor / Bremsmotor / Moteur frein Motor-freno				
	g1	g2	X	Y	~Kg	g1	g2	X	Y	~Kg
63	185	72	180	121	6	200	87	238	121	7,3
71	193	80	205	139	7,9	209	96	269	139	9,8
80	203	90	223	158	11,9	218	105	294	158	15

(..) Solo su richiesta  
 (..) Only on request  
 (..) Auf Wunsch  
 (..) Seulement sur demande  
 (..) Sólo bajo pedido

- Peso comprensivo di motore  
 - Weight with motor  
 - Gewicht mit Motor  
 - Poids avec moteur  
 - Peso con motor



PAM	A	kg
063	55	3.3
071	55	3.4
080	86	3.7

- Peso senza motore
- Weight without motor
- Gewicht ohne Motor
- Poids sans moteur
- Peso sin motor

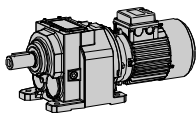
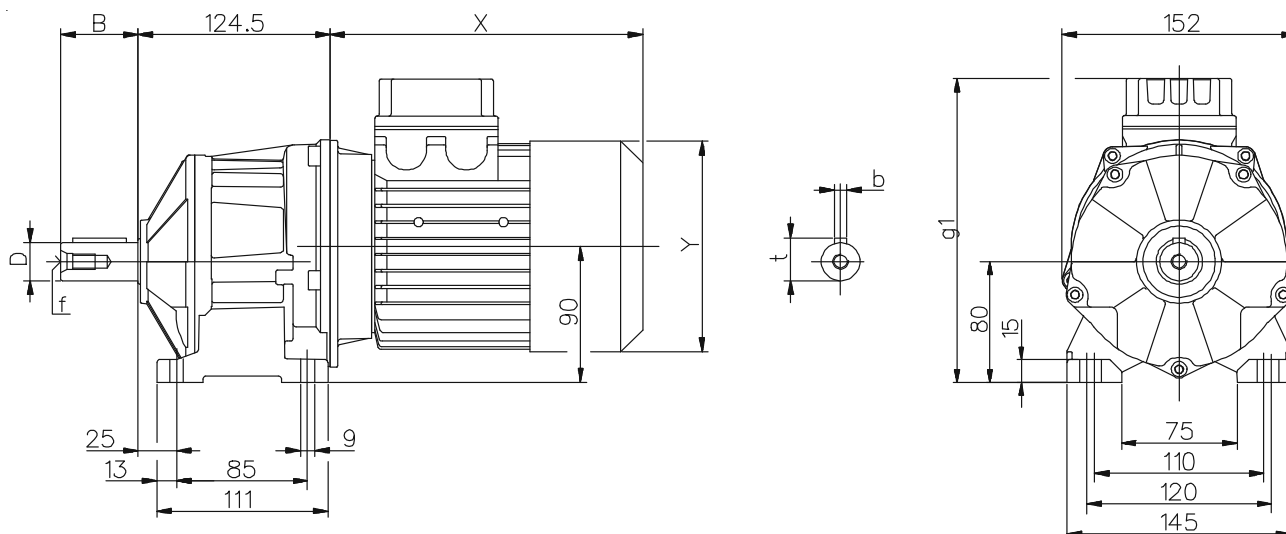
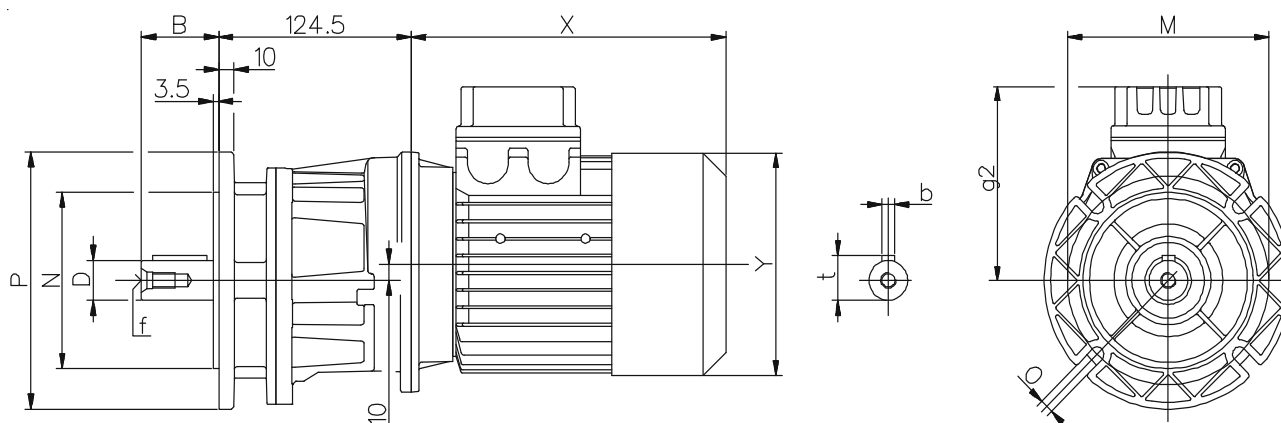
Per le dimensioni relative alla zona attacco motore (Pm, Dm, bm, tm) fare riferimento alla tabella di pag. 134.

For the dimensions concerning the motor connection area (Pm, Dm, bm, tm) please refer to the table shown at page 134.

Zu den Abmessungen des Motoranschlußflansches (Pm, Dm, bm, tm) siehe Tabelle auf Seite 134.

Pour les dimensions concernant la zone de montage du moteur (Pm, Dm, bm, tm) lire SVP le tableau à la page 134.

Para las magnitudes correspondientes a la zona del motor (Pm, Dm, bm, tm) consulte la tabla de la página 134.


**A42**
**Dimensioni / Dimensions / Abmessungen / Encombremets / Dimensiones**
**CH**

**CH...F**


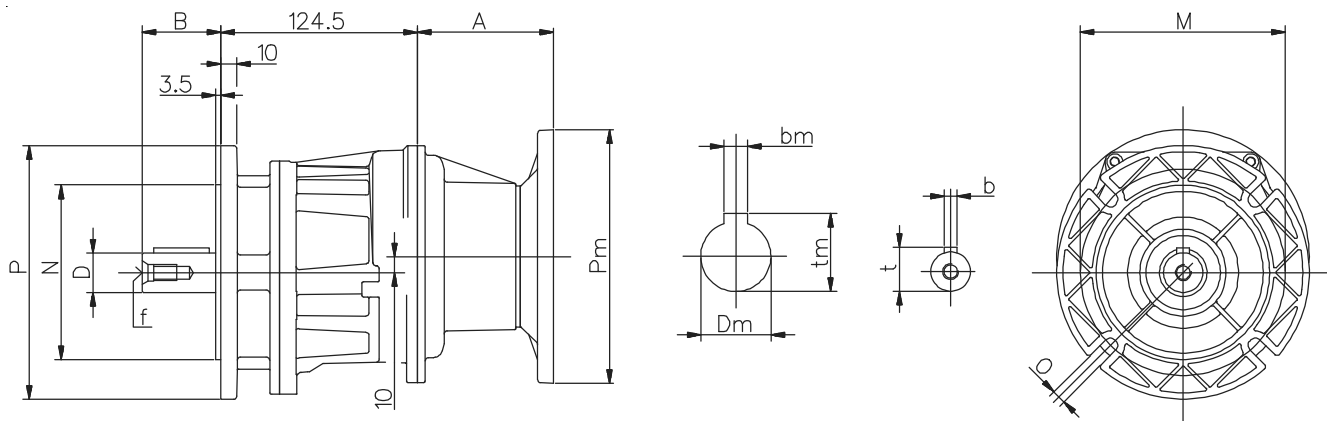
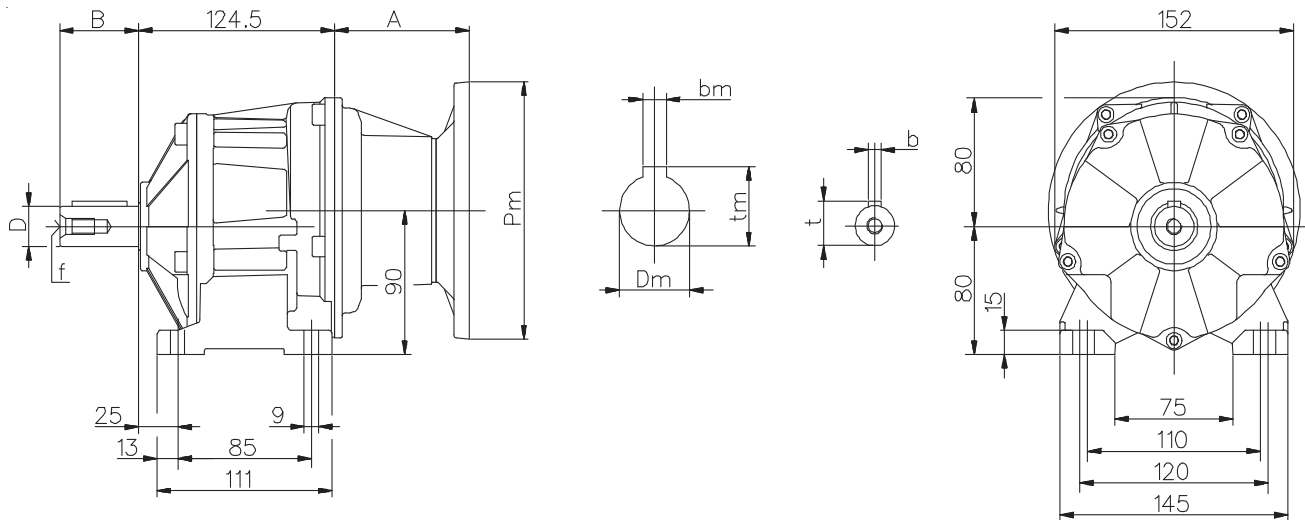
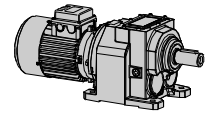
Alberi / Shaft / Wellen / Arbres / Ejes				
D j6	B	b	t	f
25	50	8	28	M10
(19)	(40)	(6)	(21,5)	(M6)

Flange / Flanges / Flansche / Flasques / Bridas			
P	M	N f8	O
160	130	110	9
(140)	(115)	(95)	(9)

A42	Motore normale / Standard motor / Normaler Motor / Moteur normal Motor normal					Motore autofrenante / Brake motor / Bremsmotor / Moteur frein Motor-freno				
	g1	g2	X	Y	~Kg	g1	g2	X	Y	~Kg
63	194	114	180	121	8,4	209	129	238	121	9,7
71	202	122	205	139	10,3	218	138	269	139	12,2
80	212	132	223	158	14,3	227	147	294	158	17,4
90S	220	140	237	173	16,2	220	140	313	173	21,1
90L	220	140	262	173	18,7	220	140	338	173	23,6

(..) Solo su richiesta  
 (..) Only on request  
 (..) Auf Wunsch  
 (..) Seulement sur demande  
 (..) Sólo bajo pedido

- Peso comprensivo di motore  
 - Weight with motor  
 - Gewicht mit Motor  
 - Poids avec moteur  
 - Peso con motor



Alberi / Shaft / Wellen / Arbres / Ejes				
D j6	B	b	t	f
25	50	8	28	M10
(19)	(40)	(6)	(21,5)	(M6)

Flange / Flanges / Flansche / Flasques / Bidas			
P	M	N f8	O
160	130	110	9
(140)	(115)	(95)	(9)

PAM	A	kg
063	55	5.8
071	55	5.9
080 - 090	86	6.1

- Peso senza motore (..) Solo su richiesta
- Weight without motor (..) Only on request
- Gewicht ohne Motor (..) Auf Wunsch
- Poids sans moteur (..) Seulement sur demande
- Peso sin motor (..) Sòlo bajo pedido

Per le dimensioni relative alla zona attacco motore (Pm, Dm, bm, tm) fare riferimento alla tabella di pag. 134.

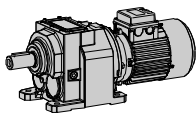
For the dimensions concerning the motor connection area (Pm, Dm, bm, tm) please refer to the table shown at page 134.

Zu den Abmessungen des Motoranschlußflansches (Pm, Dm, bm, tm) siehe Tabelle auf Seite 134.

Pour les dimensions concernant la zone de montage du moteur (Pm, Dm, bm, tm) lire SVP le tableau à la page 134.

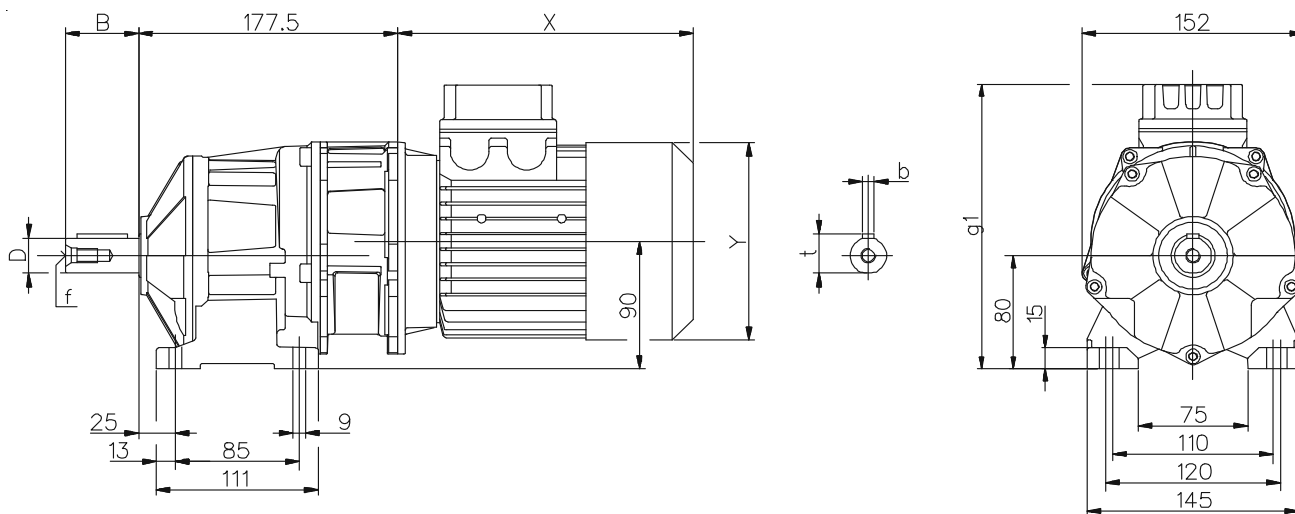
Para las magnitudes correspondientes a la zona del motor (Pm, Dm, bm, tm) consulte la tabla de la página 134.



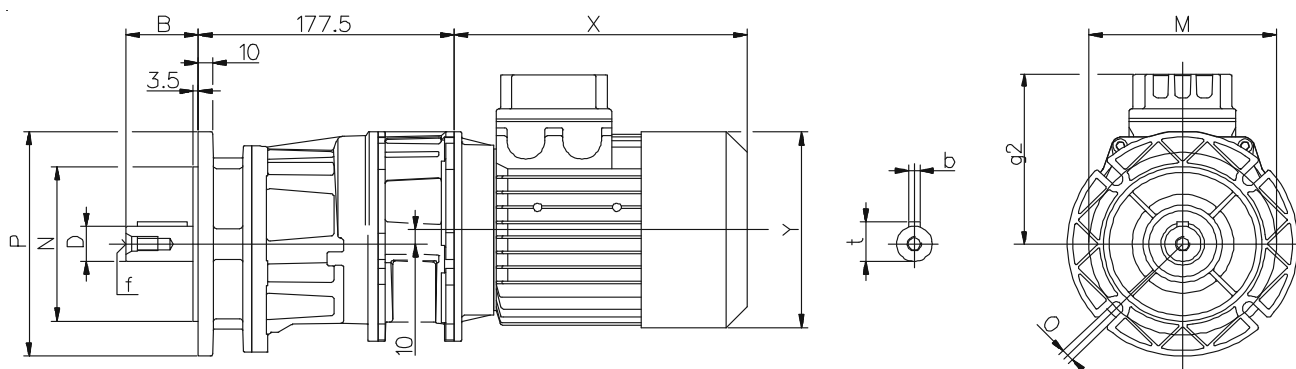


**A43**    Dimensioni / Dimensions / Abmessungen / Encombremets / Dimensiones

**CH**



**CH...F**



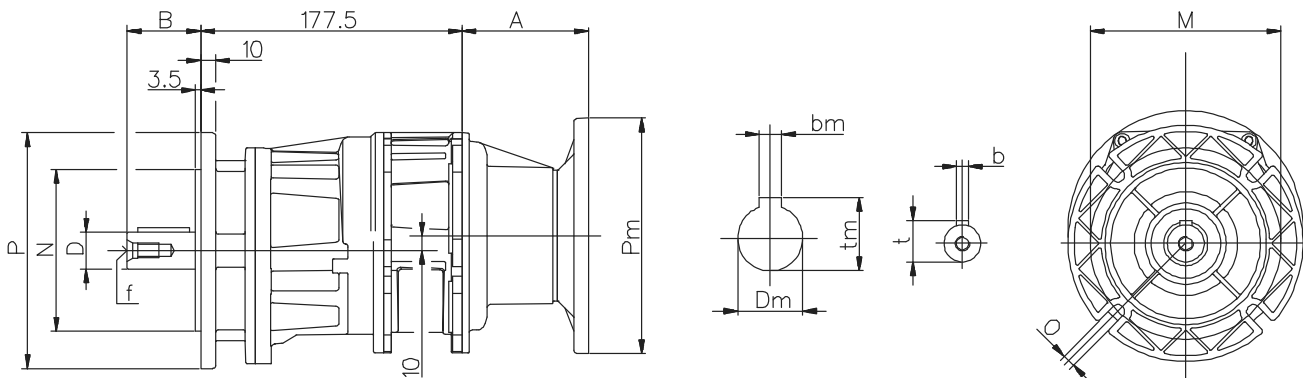
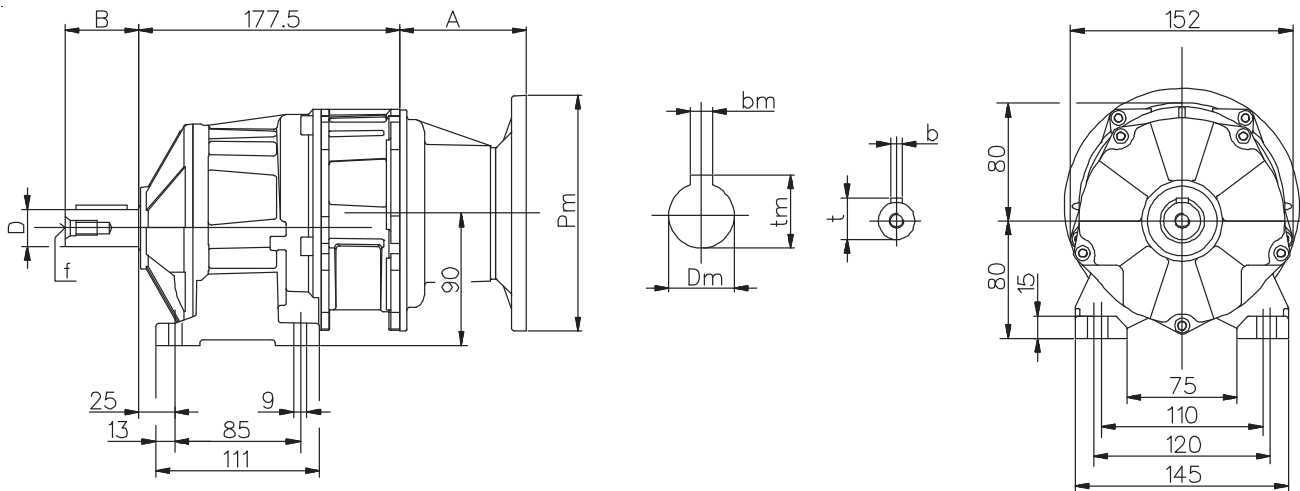
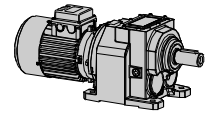
Alberi / Shaft / Wellen / Arbres / Ejes				
D j6	B	b	t	f
25	50	8	28	M10
(19)	(40)	(6)	(21,5)	(M6)

Flange / Flanges / Flansche / Flasques / Bridas			
P	M	N f8	O
160	130	110	9
(140)	(115)	(95)	(9)

A43	Motore normale / Standard motor / Normaler Motor / Moteur normal Motor normal					Motore autofrenante / Brake motor / Bremsmotor / Moteur frein Motor-freno				
	g1	g2	X	Y	~Kg	g1	g2	X	Y	~Kg
63	194	114	180	121	9,4	209	129	238	121	10,7
71	202	122	205	139	11,3	218	138	269	139	13,2
80	212	132	223	158	15,3	227	147	294	158	18,4
90S	220	140	237	173	17,2	220	140	313	173	22,1
90L	220	140	262	173	19,7	220	140	338	173	24,6

(..) Solo su richiesta  
 (..) Only on request  
 (..) Auf Wunsch  
 (..) Seulement sur demande  
 (..) Sólo bajo pedido

- Peso comprensivo di motore  
 - Weight with motor  
 - Gewicht mit Motor  
 - Poids avec moteur  
 - Peso con motor


**Alberi / Shaft / Wellen / Arbres / Ejes**

D j6	B	b	t	f
25	50	8	28	M10
(19)	(40)	(6)	(21,5)	(M6)

**Flange / Flanges / Flansche / Flasques / Bidas**

P	M	N f8	O
160	130	110	9
(140)	(115)	(95)	(9)

PAM	A	kg
063	55	6.8
071	55	6.9
080 - 090	86	7.1

- Peso senza motore                   (..) Solo su richiesta
- Weight without motor               (..) Only on request
- Gewicht ohne Motor                 (..) Auf Wunsch
- Poids sans moteur                 (..) Seulement sur demande
- Peso sin motor                       (..) Sólo bajo pedido

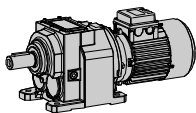
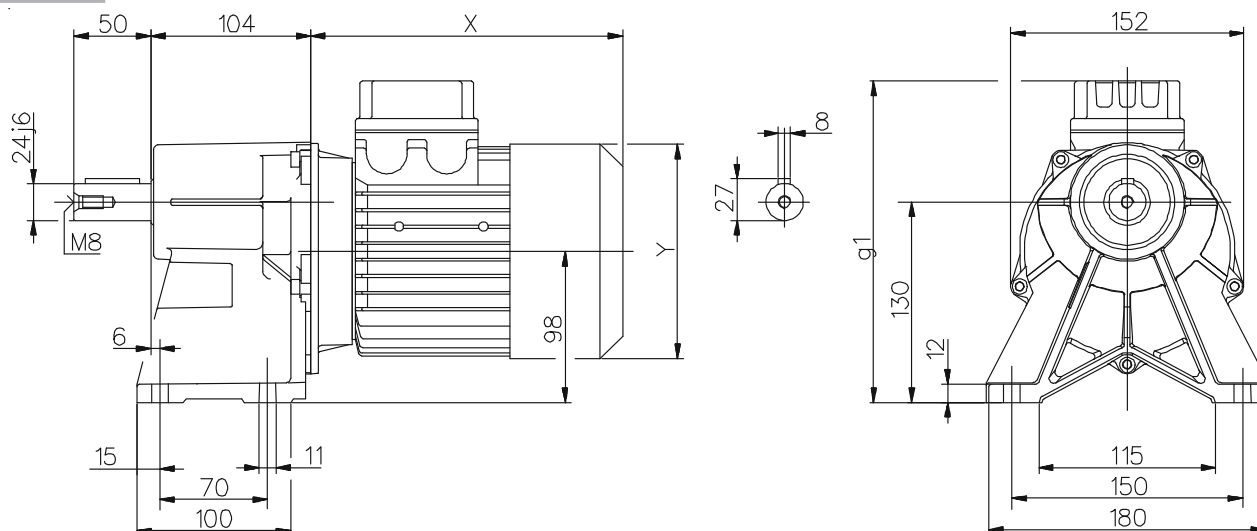
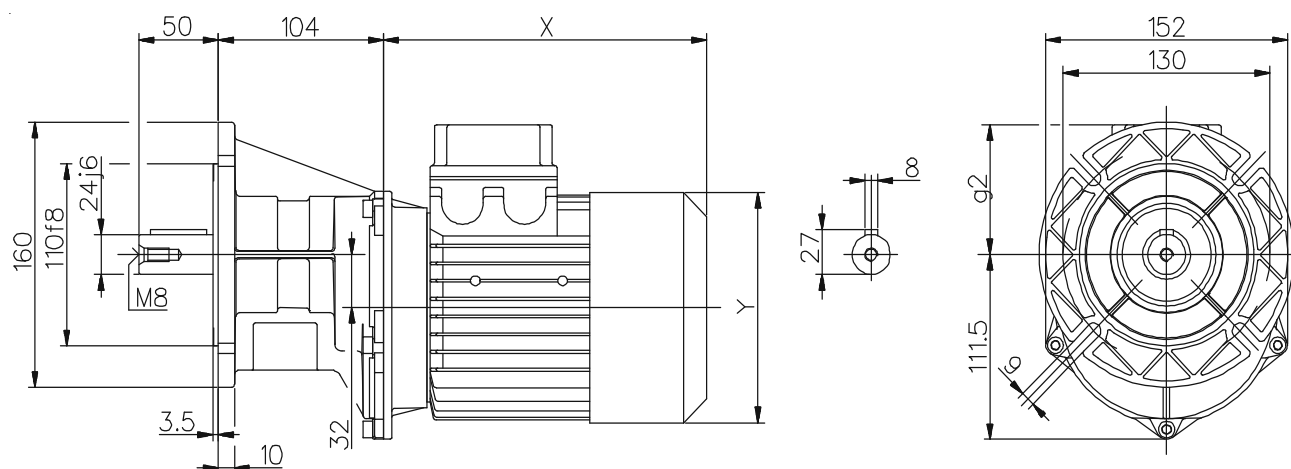
Per le dimensioni relative alla zona attacco motore (Pm, Dm, bm, tm) fare riferimento alla tabella di pag. 134.

For the dimensions concerning the motor connection area (Pm, Dm, bm, tm) please refer to the table shown at page 134.

Zu den Abmessungen des Motoranschlußflansches (Pm, Dm, bm, tm) siehe Tabelle auf Seite 134.

Pour les dimensions concernant la zone de montage du moteur (Pm, Dm, bm, tm) lire SVP le tableau à la page 134.

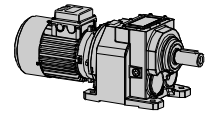
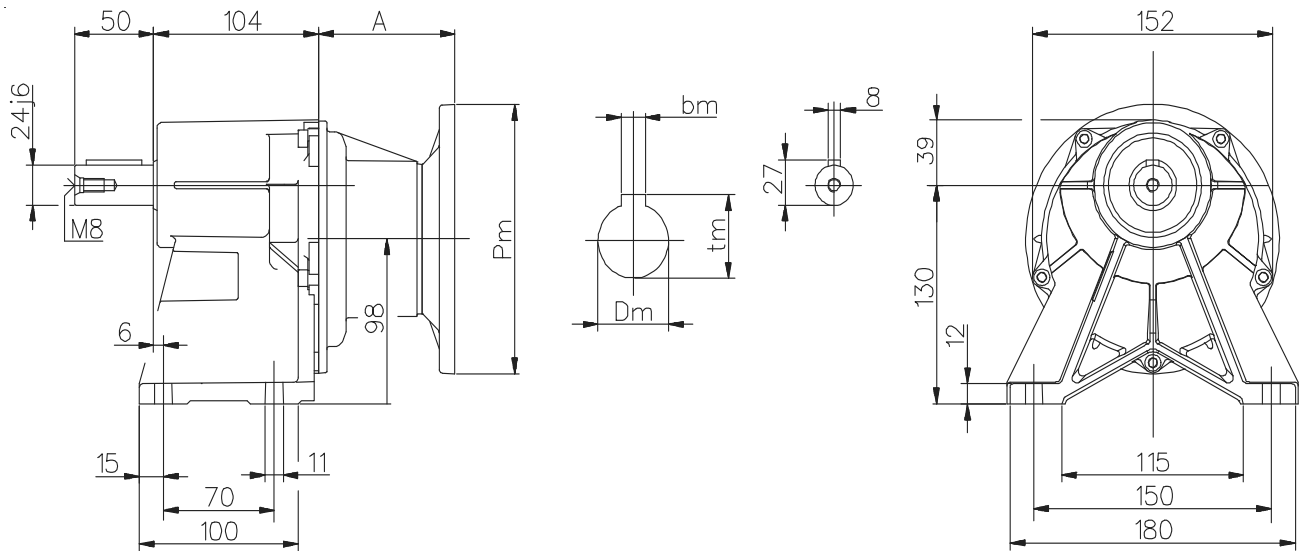
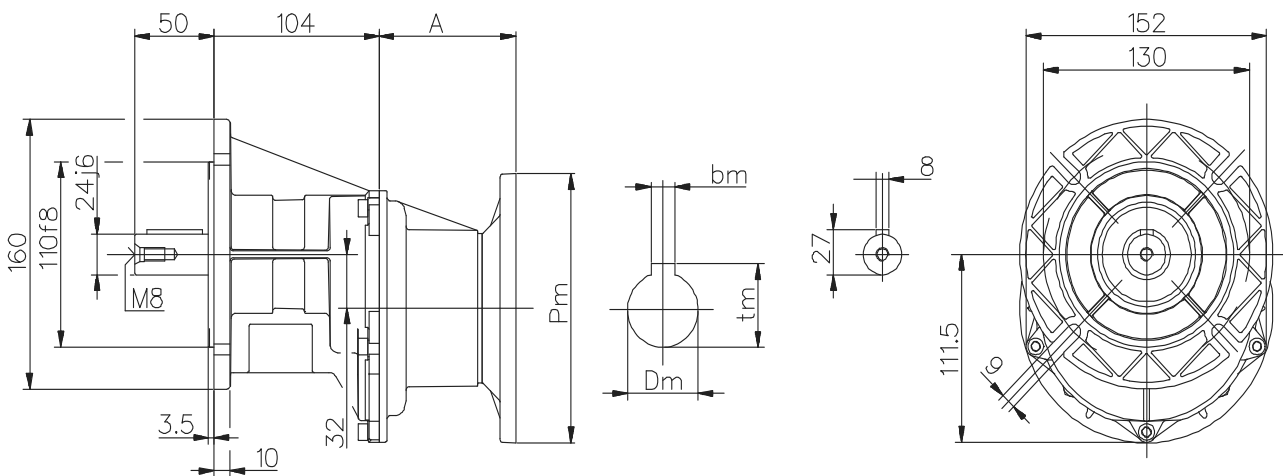
Para las magnitudes correspondientes a la zona del motor (Pm, Dm, bm, tm) consulte la tabla de la página 134.


**A51**
**Dimensioni / Dimensions / Abmessungen / Encombremets / Dimensiones**
**CH**

**CH...F**


A51	Motore normale / Standard motor / Normaler Motor / Moteur normal Motor normal					Motore autofrenante / Brake motor / Bremsmotor / Moteur frein Motor-freno				
	g1	g2	X	Y	~Kg	g1	g2	X	Y	~Kg
63	202	72	180	121	6,4	217	87	238	121	7,7
71	210	80	205	139	8,3	226	96	269	139	10,2
80	220	90	223	158	12,3	235	105	294	158	15,4
90S	228	98	237	173	14,2	228	98	313	173	19,1
90L	228	98	262	173	16,7	228	98	338	173	21,6

(..) Solo su richiesta  
 (..) Only on request  
 (..) Auf Wunsch  
 (..) Seulement sur demande  
 (..) Sólo bajo pedido

- Peso comprensivo di motore  
 - Weight with motor  
 - Gewicht mit Motor  
 - Poids avec moteur  
 - Peso con motor


**H**

**H...F**


PAM	A	kg
063	55	4.4
071	55	4.5
080 - 090	86	4.7

- Peso senza motore
- Weight without motor
- Gewicht ohne Motor
- Poids sans moteur
- Peso sin motor

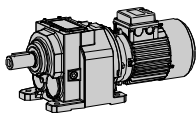
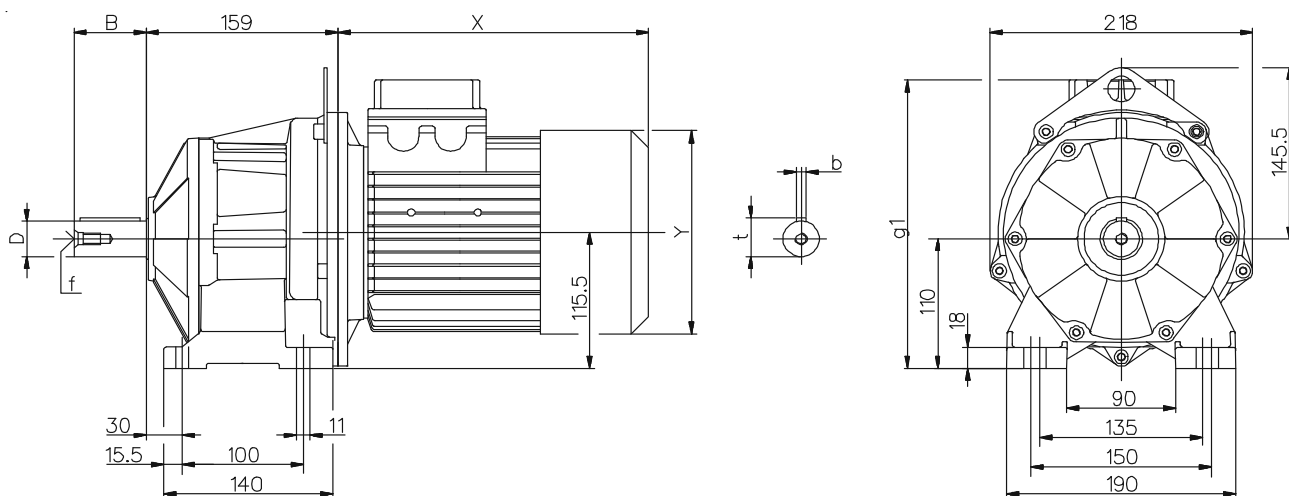
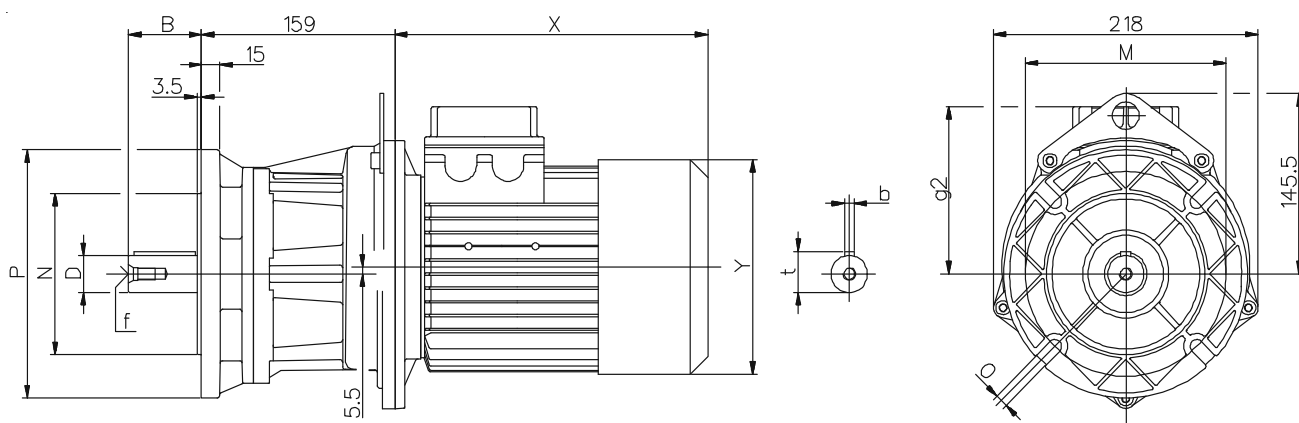
Per le dimensioni relative alla zona attacco motore (Pm, Dm, bm, tm) fare riferimento alla tabella di pag. 134.

For the dimensions concerning the motor connection area (Pm, Dm, bm, tm) please refer to the table shown at page 134.

Zu den Abmessungen des Motoranschlußflansches (Pm, Dm, bm, tm) siehe Tabelle auf Seite 134.

Pour les dimensions concernant la zone de montage du moteur (Pm, Dm, bm, tm) lire SVP le tableau à la page 134.

Para las magnitudes correspondientes a la zona del motor (Pm, Dm, bm, tm) consulte la tabla de la página 134.


**A52**
**Dimensioni / Dimensions / Abmessungen / Encombremets / Dimensiones**
**CH**

**CH...F**


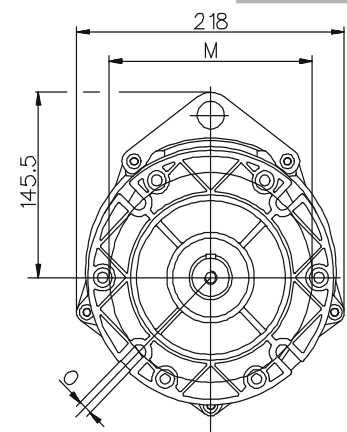
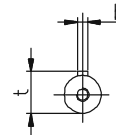
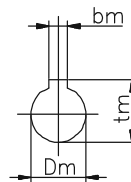
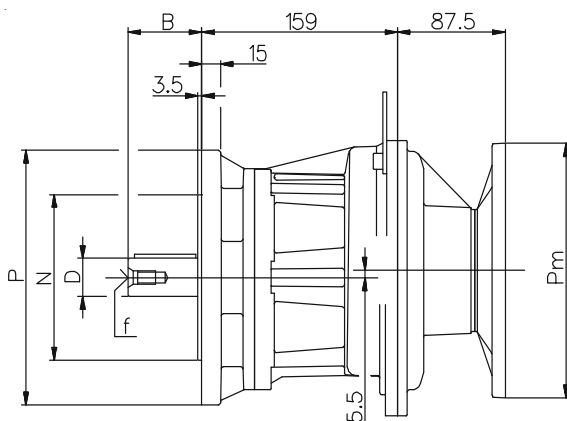
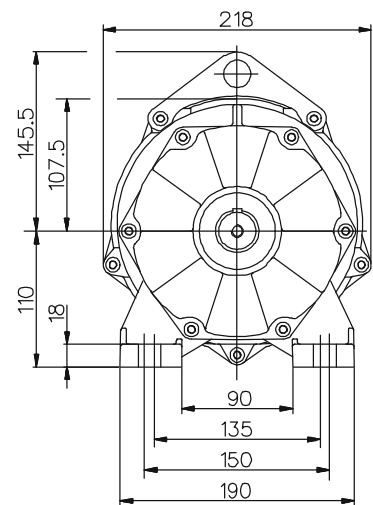
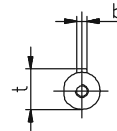
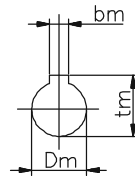
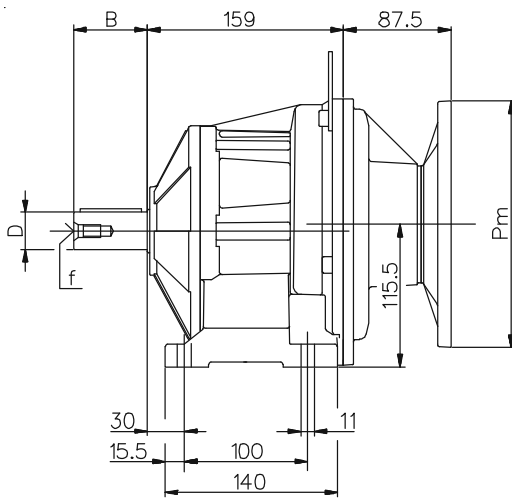
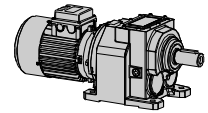
Alberi / Shaft / Wellen / Arbres / Ejes				
D j6	B	b	t	f
30	60	8	33	M10
(35)	(70)	(10)	(38)	(M12)
(24)	(50)	(8)	(27)	(M8)

Flange / Flanges / Flansche / Flasques / Bridas			
P	M	N f8	O
200	165	130	11
(160)	(130)	(110)	(11)
-	-	-	-

A52	Motore normale / Standard motor / Normaler Motor / Moteur normal Motor normal					Motore autofrenante / Brake motor / Bremsmotor / Moteur frein Motor-freno				
	g1	g2	X	Y	~Kg	g1	g2	X	Y	~Kg
80	237	127	218	158	18,3	253	143	290	158	21,4
90S	245	135	232	173	20,2	245	135	309	173	25,4
90L	245	135	257	173	22,7	245	135	334	173	27,6
100	254	144	291	191	27,3	254	144	372	191	32,2
112	269	159	305	211	37,6	269	159	400	211	45,9

(..) Solo su richiesta  
 (..) Only on request  
 (..) Auf Wunsch  
 (..) Seulement sur demande  
 (..) Sólo bajo pedido

- Peso comprensivo di motore  
 - Weight with motor  
 - Gewicht mit Motor  
 - Poids avec moteur  
 - Peso con motor



Alberi / Shaft / Wellen / Arbres / Ejes

D j6	B	b	t	f
30	60	8	33	M10
(35)	(70)	(10)	(38)	(M12)
(24)	(50)	(8)	(27)	(M8)

Flange / Flanges / Flansche / Flasques / Bridas

P	M	N f8	O
200	165	130	11
(160)	(130)	(110)	(11)
-	-	-	-

PAM	~kg
080-090	10.6
100 - 112	14.1

- Peso senza motore (..) Solo su richiesta
- Weight without motor (..) Only on request
- Gewicht ohne Motor (..) Auf Wunsch
- Poids sans moteur (..) Seulement sur demande
- Peso sin motor (..) Sólo bajo pedido

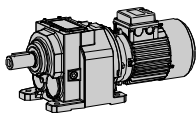
Per le dimensioni relative alla zona attacco motore (Pm, Dm, bm, tm) fare riferimento alla tabella di pag. 134.

For the dimensions concerning the motor connection area (Pm, Dm, bm, tm) please refer to the table shown at page 134.

Zu den Abmessungen des Motoranschlußflansches (Pm, Dm, bm, tm) siehe Tabelle auf Seite 134.

Pour les dimensions concernant la zone de montage du moteur (Pm, Dm, bm, tm) lire SVP le tableau à la page 134.

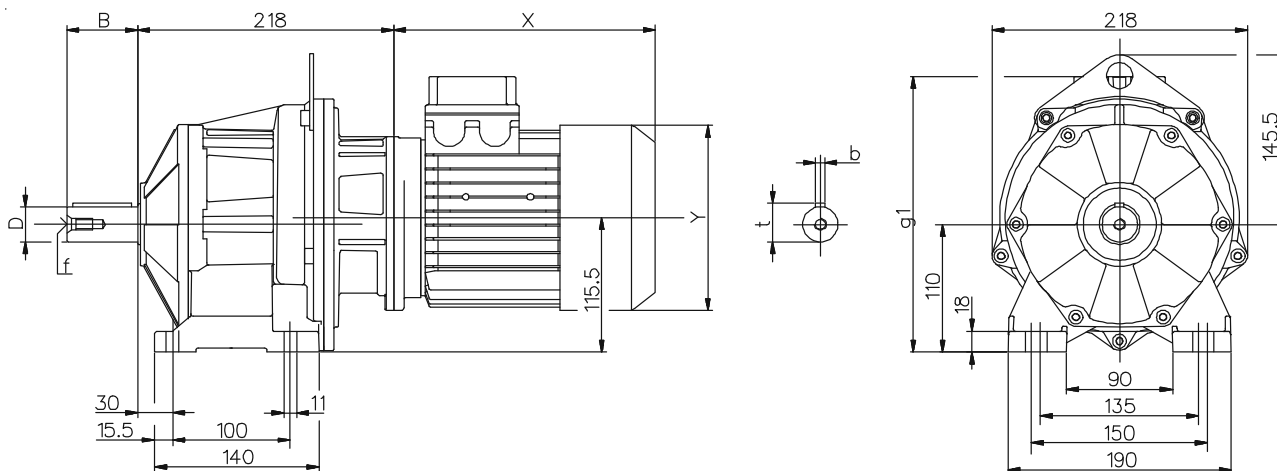
Para las magnitudes correspondientes a la zona del motor (Pm, Dm, bm, tm) consulte la tabla de la página 134.



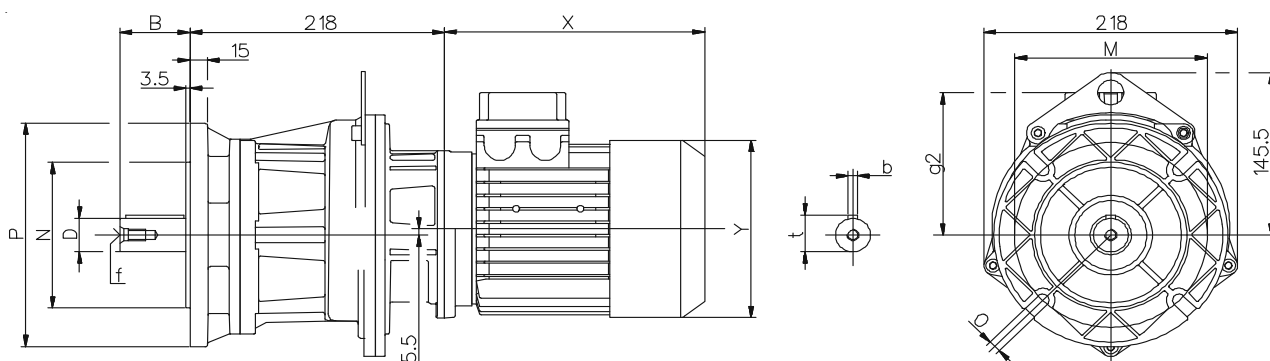
**A53**

**Dimensioni / Dimensions / Abmessungen / Encombremets / Dimensiones**

**CH**



**CH...F**



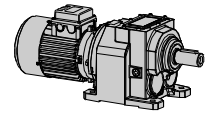
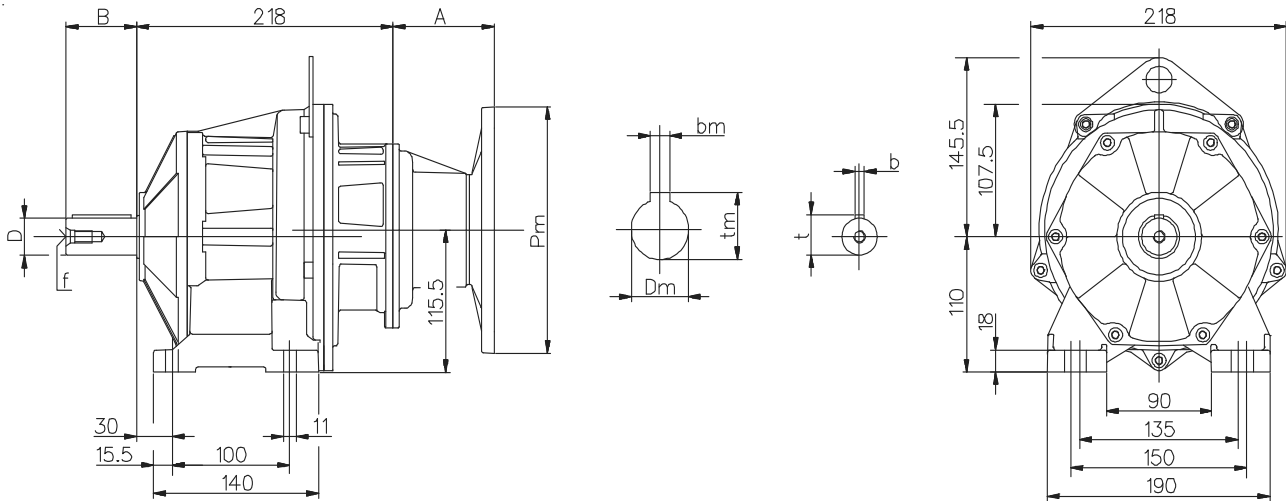
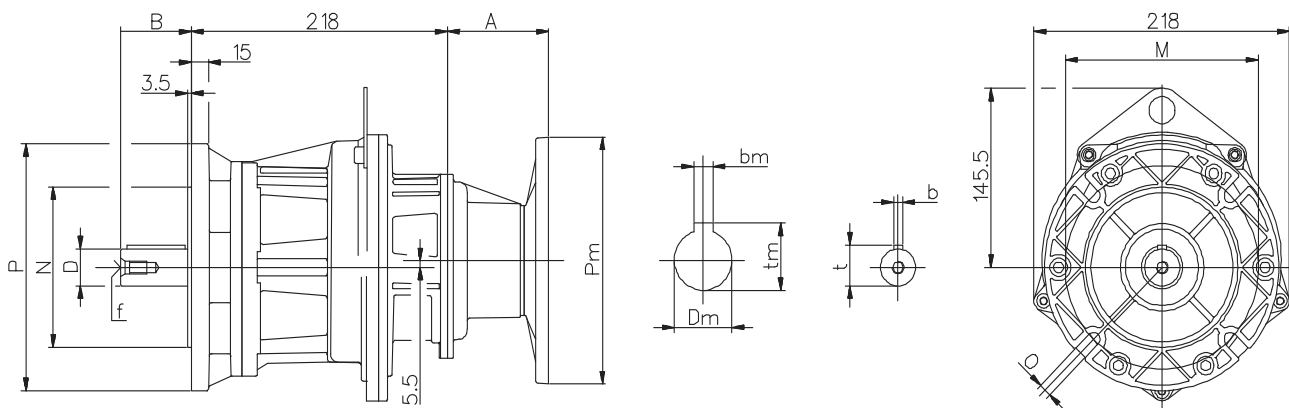
Alberi / Shaft / Wellen / Arbres / Ejes				
D j6	B	b	t	f
30	60	8	33	M10
(35)	(70)	(10)	(38)	(M12)
(24)	(50)	(8)	(27)	(M8)

Flange / Flanges / Flansche / Flasques / Bidas			
P	M	N f8	O
200	165	130	11
(160)	(130)	(110)	(11)
-	-	-	-

A53	Motore normale / Standard motor / Normaler Motor / Moteur normal Motor normal					Motore autofrenante / Brake motor / Bremsmotor / Moteur frein Motor-freno				
	g1	g2	X	Y	~Kg	g1	g2	X	Y	~Kg
63	219	109	180	121	13,7	235	125	238	121	15
71	228	118	205	139	15,6	244	134	269	139	17,5
80	237	127	218	158	19,6	253	143	290	158	22,7
90S	245	135	237	173	21,5	245	135	313	173	26,4
90L	245	135	262	173	24	245	135	338	173	28,9

(..) Solo su richiesta  
 (..) Only on request  
 (..) Auf Wunsch  
 (..) Seulement sur demande  
 (..) Sólo bajo pedido

- Peso comprensivo di motore  
 - Weight with motor  
 - Gewicht mit Motor  
 - Poids avec moteur  
 - Peso con motor


**H**

**H...F**

**Alberi / Shaft / Wellen / Arbres / Ejes**

D j6	B	b	t	f
30	60	8	33	M10
(35)	(70)	(10)	(38)	(M12)
(24)	(50)	(8)	(27)	(M8)

**Flange / Flanges / Flansche / Flasques / Bidas**

P	M	N f8	O
200	165	130	11
(160)	(130)	(110)	(11)
-	-	-	-

PAM	A	kg
063	55	11.6
071	55	11.7
080 - 090	86	11.9

- Peso senza motore                   (..) Solo su richiesta
- Weight without motor               (..) Only on request
- Gewicht ohne Motor                 (..) Auf Wunsch
- Poids sans moteur                 (..) Seulement sur demande
- Peso sin motor                       (..) Sólo bajo pedido

Per le dimensioni relative alla zona attacco motore (Pm, Dm, bm, tm) fare riferimento alla tabella di pag. 134.

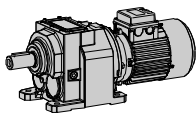
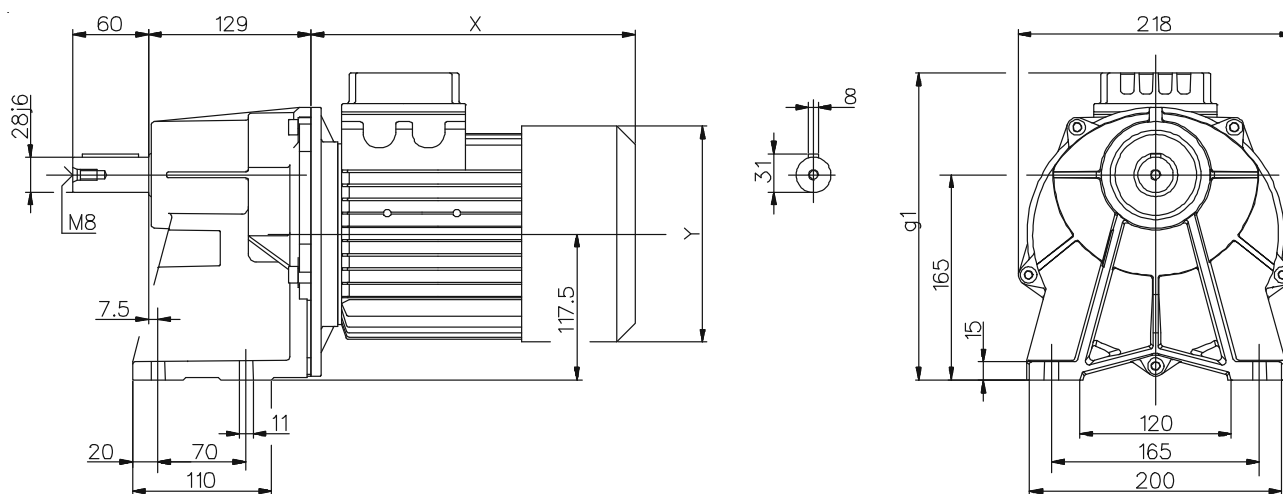
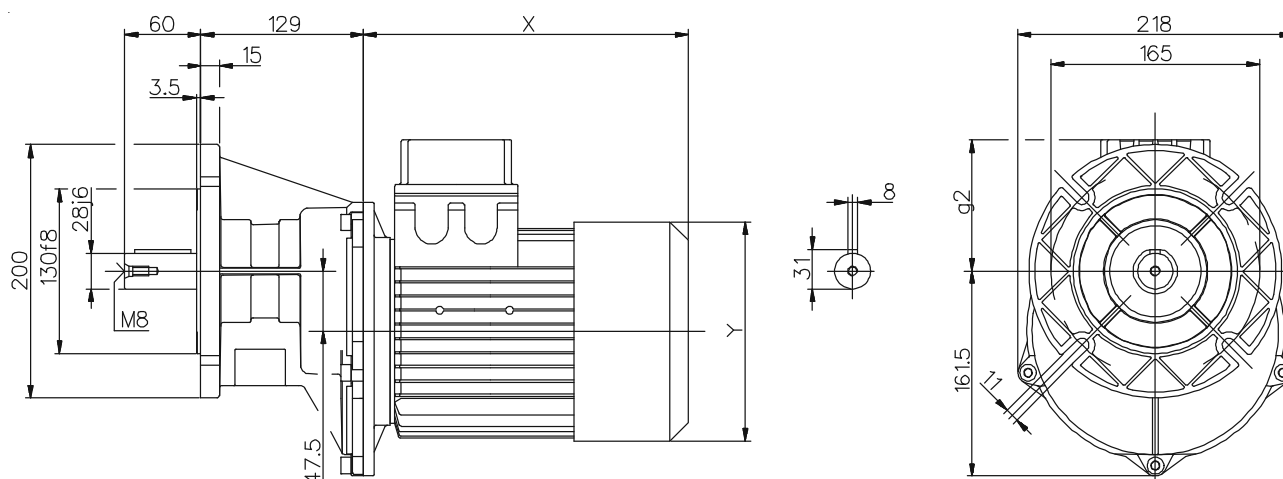
For the dimensions concerning the motor connection area (Pm, Dm, bm, tm) please refer to the table shown at page 134.

Zu den Abmessungen des Motoranschlußflansches (Pm, Dm, bm, tm) siehe Tabelle auf Seite 134.

Pour les dimensions concernant la zone de montage du moteur (Pm, Dm, bm, tm) lire SVP le tableau à la page 134.

Para las magnitudes correspondientes a la zona del motor (Pm, Dm, bm, tm) consulte la tabla de la página 134.

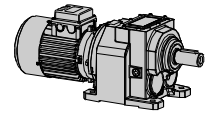
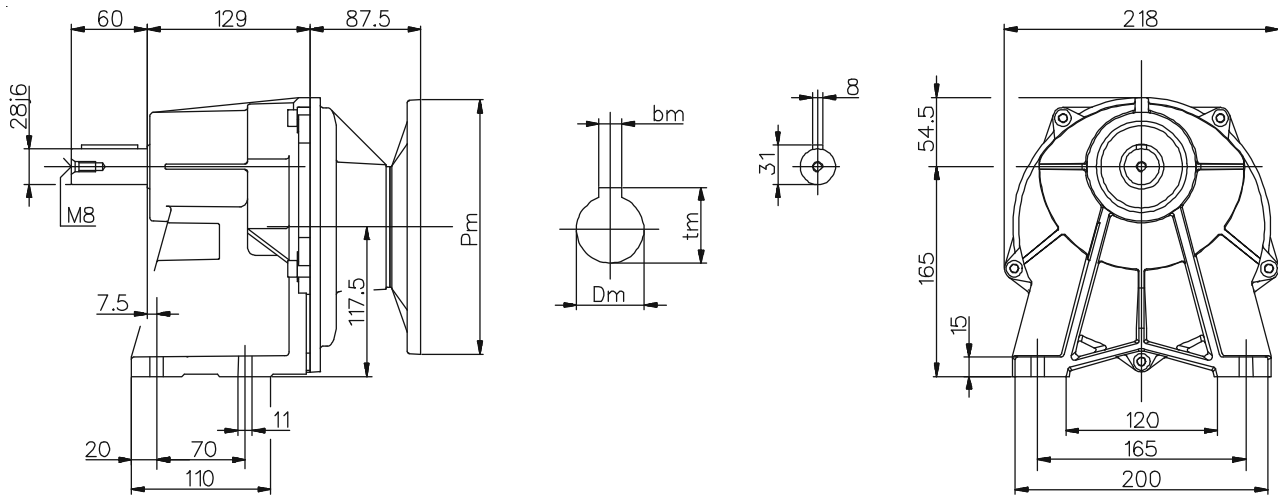
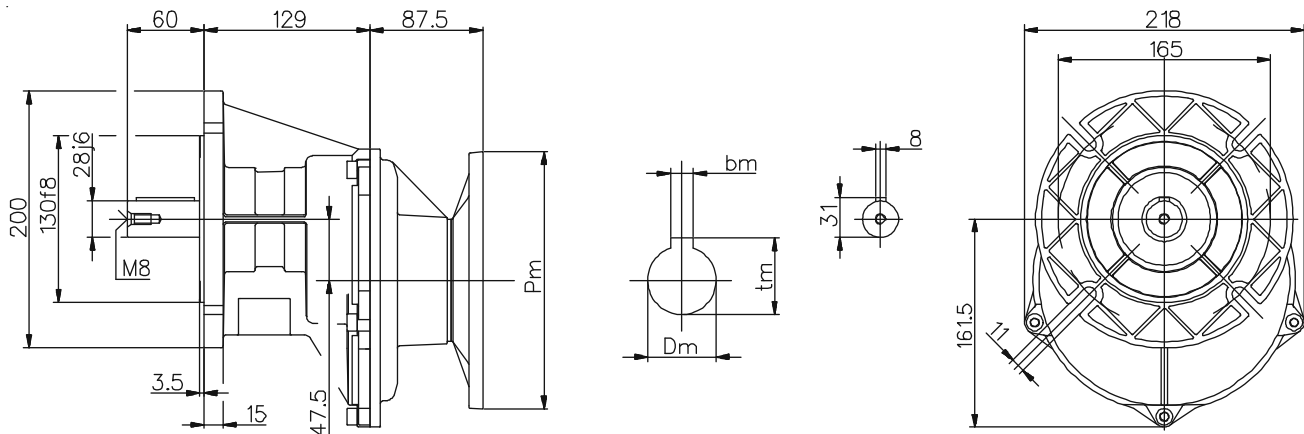



**A61**
**Dimensioni / Dimensions / Abmessungen / Encombremets / Dimensiones**
**CH**

**CH...F**


A61	Motore normale / Standard motor / Normaler Motor / Moteur normal Motor normal					Motore autofrenante / Brake motor / Bremsmotor / Moteur frein Motor-freno				
	g1	g2	X	Y	~Kg	g1	g2	X	Y	~Kg
80	239	74	218	158	14,9	255	90	290	158	18
90S	247	82	232	173	16,8	247	82	309	173	21,7
90L	247	82	257	173	19,3	247	82	334	173	24,2
100	256	91	291	191	23,9	256	91	372	191	28,8
112	271	106	305	211	34,2	271	106	400	211	42,5

(..) Solo su richiesta  
 (..) Only on request  
 (..) Auf Wunsch  
 (..) Seulement sur demande  
 (..) Sólo bajo pedido

- Peso comprensivo di motore  
 - Weight with motor  
 - Gewicht mit Motor  
 - Poids avec moteur  
 - Peso con motor


**H**

**H...F**


<b>PAM</b>	<b>~kg</b>
<b>080-090</b>	7.2
<b>100 - 112</b>	7.6

- Peso senza motore
- Weight without motor
- Gewicht ohne Motor
- Poids sans moteur
- Peso sin motor

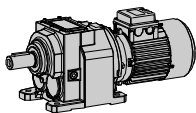
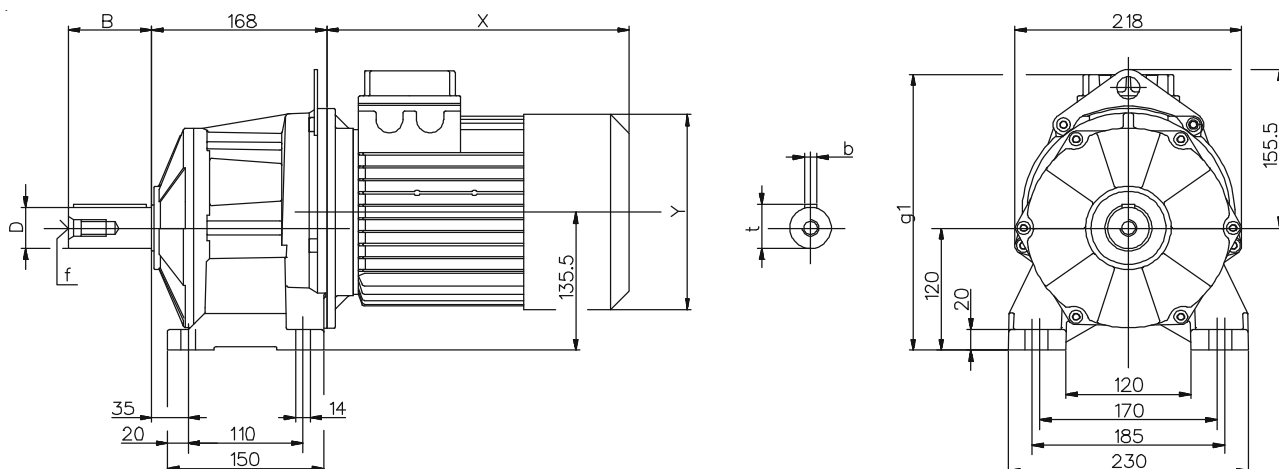
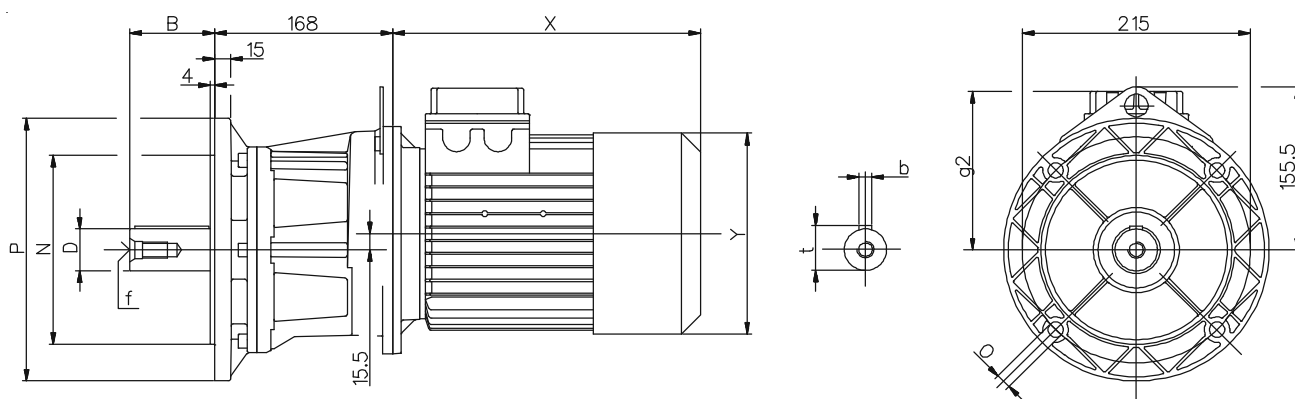
Per le dimensioni relative alla zona attacco motore (Pm, Dm, bm, tm) fare riferimento alla tabella di pag. 134.

For the dimensions concerning the motor connection area (Pm, Dm, bm, tm) please refer to the table shown at page 134.

Zu den Abmessungen des Motoranschlußflansches (Pm, Dm, bm, tm) siehe Tabelle auf Seite 134.

Pour les dimensions concernant la zone de montage du moteur (Pm, Dm, bm, tm) lire SVP le tableau à la page 134.

Para las magnitudes correspondientes a la zona del motor (Pm, Dm, bm, tm) consulte la tabla de la página 134.


**A62**
**Dimensioni / Dimensions / Abmessungen / Encombremets / Dimensiones**
**CH**

**CH...F**


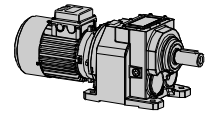
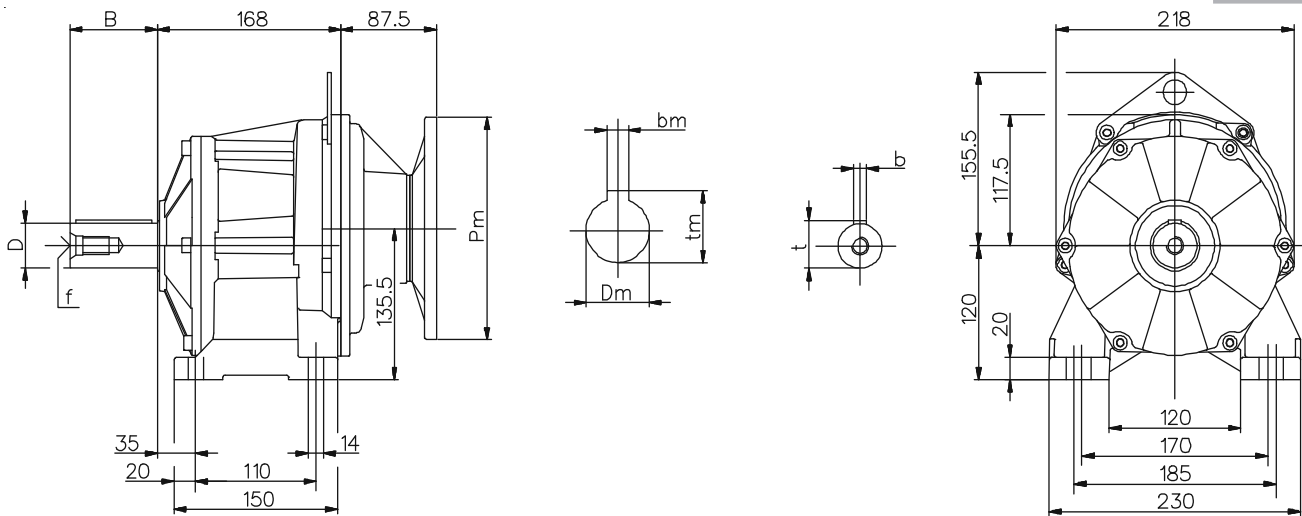
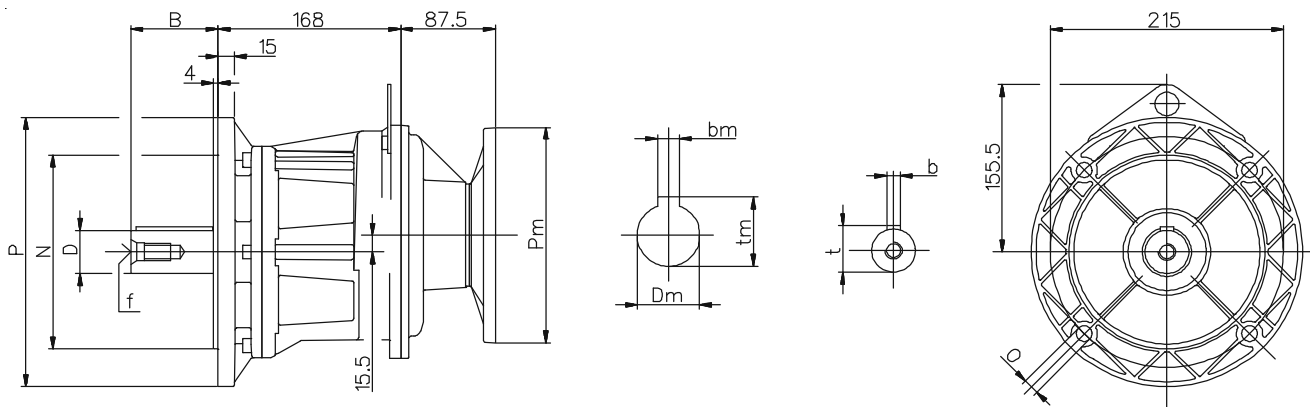
Alberi / Shaft / Wellen / Arbres / Ejes				
D j6	B	b	t	f
40	80	12	43	M16
(28)	(60)	(8)	(31)	(M10)

Flange / Flanges / Flansche / Flasques / Bidas			
P	M	N f8	O
250	215	180	14
(200)	(165)	(130)	(14)

A62	Motore normale / Standard motor / Normaler Motor / Moteur normal Motor normal					Motore autofrenante / Brake motor / Bremsmotor / Moteur frein Motor-freno				
	g1	g2	X	Y	~Kg	g1	g2	X	Y	~Kg
80	257	137	218	158	20,9	273	153	290	158	24
90S	265	145	232	173	22,8	265	145	309	173	27,7
90L	265	145	257	173	25,3	265	145	334	173	30,2
100	274	154	291	191	29,9	274	154	372	191	34,8
112	289	169	305	211	40,2	289	169	400	211	48,5

(..) Solo su richiesta  
 (..) Only on request  
 (..) Auf Wunsch  
 (..) Seulement sur demande  
 (..) Sólo bajo pedido

- Peso comprensivo di motore  
 - Weight with motor  
 - Gewicht mit Motor  
 - Poids avec moteur  
 - Peso con motor


**H**

**H...F**


Alberi / Shaft / Wellen / Arbres / Ejes				
D j6	B	b	t	f
40	80	12	43	M16
(28)	(60)	(8)	(31)	(M10)

Flange / Flanges / Flansche / Flasques / Bidas			
P	M	N f8	O
250	215	180	14
(200)	(165)	(130)	(14)

PAM	~kg
080-090	13
100 - 112	16.5

- Peso senza motore (... Solo su richiesta)
- Weight without motor (... Only on request)
- Gewicht ohne Motor (... Auf Wunsch)
- Poids sans moteur (... Seulement sur demande)
- Peso sin motor (... Sólo bajo pedido)

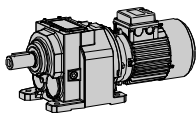
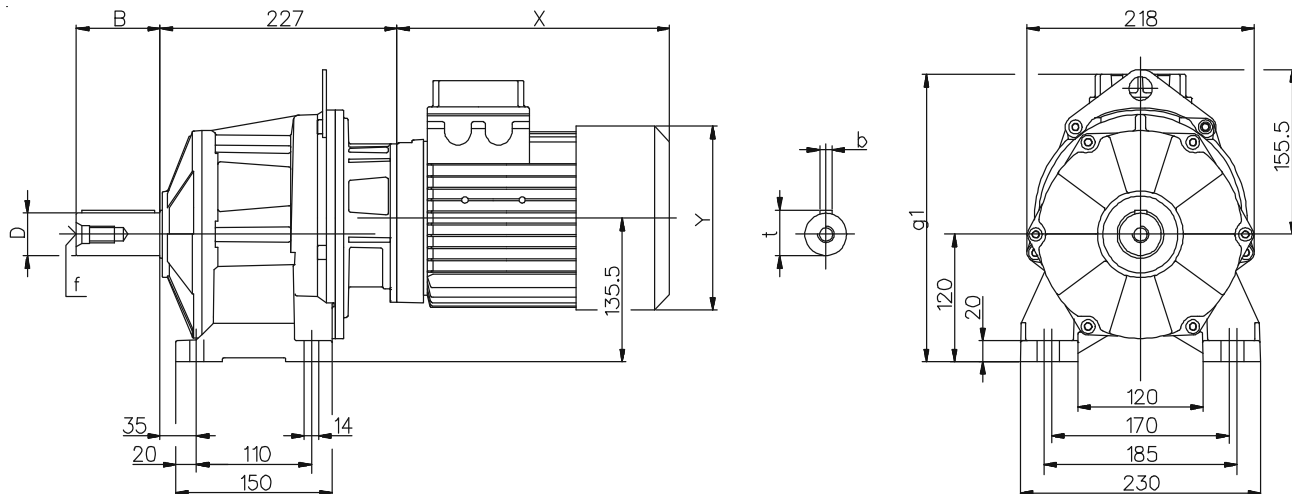
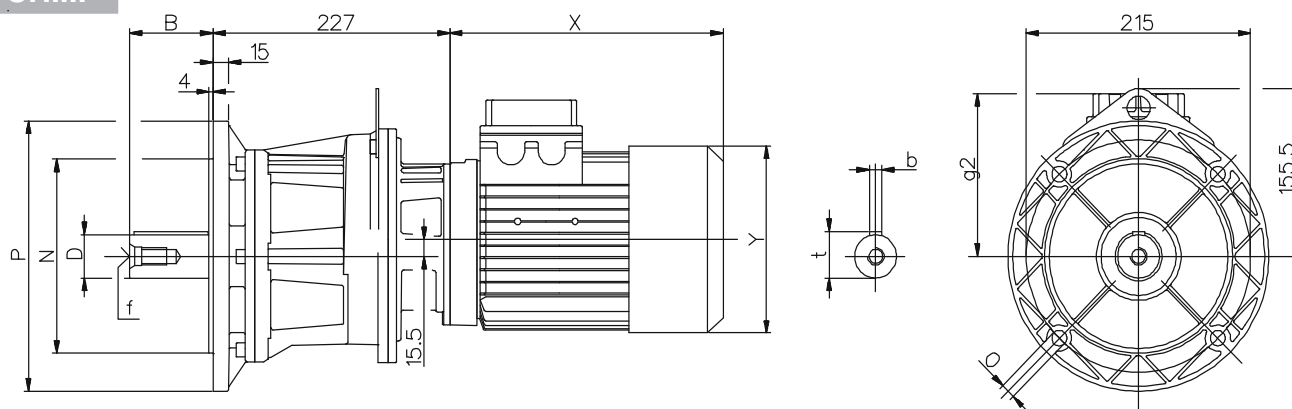
Per le dimensioni relative alla zona attacco motore (Pm, Dm, bm, tm) fare riferimento alla tabella di pag. 134.

For the dimensions concerning the motor connection area (Pm, Dm, bm, tm) please refer to the table shown at page 134.

Zu den Abmessungen des Motoranschlußflansches (Pm, Dm, bm, tm) siehe Tabelle auf Seite 134.

Pour les dimensions concernant la zone de montage du moteur (Pm, Dm, bm, tm) lire SVP le tableau à la page 134.

Para las magnitudes correspondientes a la zona del motor (Pm, Dm, bm, tm) consulte la tabla de la página 134.


**A63**
**Dimensioni / Dimensions / Abmessungen / Encombremets / Dimensiones**
**CH**

**CH...F**


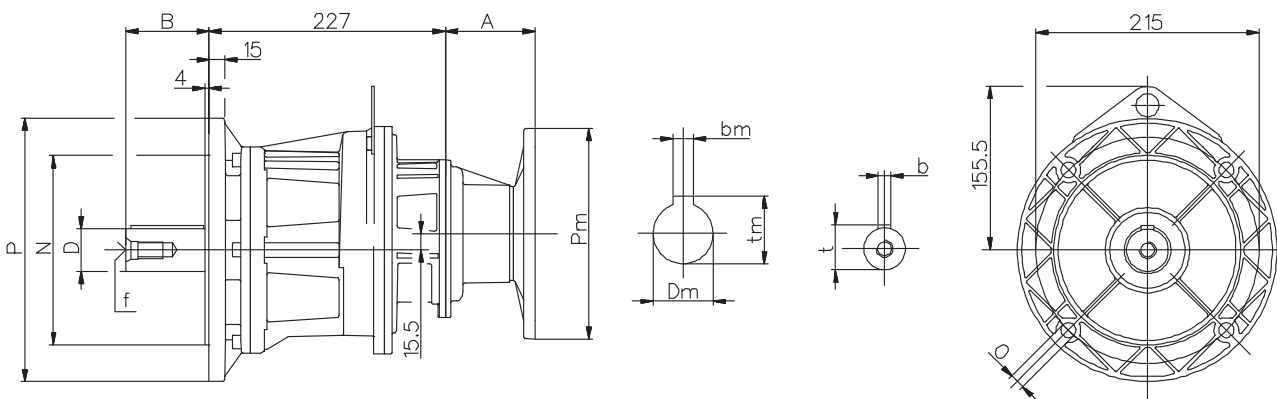
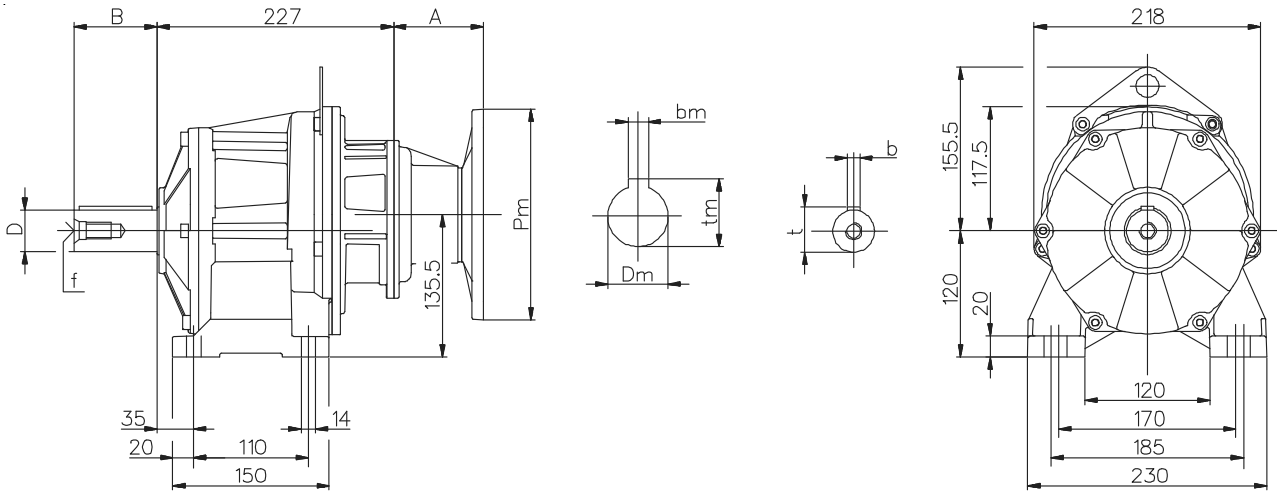
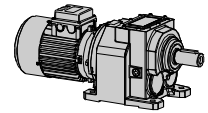
Alberi / Shaft / Wellen / Arbres / Ejes				
D j6	B	b	t	f
<b>40</b>	80	12	43	M16
<b>(28)</b>	(60)	(8)	(31)	(M10)

Flange / Flanges / Flansche / Flasques / Bridas			
P	M	N f8	O
<b>250</b>	215	180	14
<b>(200)</b>	(165)	(130)	(14)

<b>A63</b>	Motore normale / Standard motor / Normaler Motor / Moteur normal Motor normal					Motore autofrenante / Brake motor / Bremsmotor / Moteur frein Motor-freno				
	g1	g2	X	Y	~Kg	g1	g2	X	Y	~Kg
<b>63</b>	239	119	180	121	16,7	255	135	238	121	18
<b>71</b>	248	128	205	139	18,6	264	144	269	139	20,5
<b>80</b>	257	137	218	158	22,6	273	153	290	158	25,7
<b>90S</b>	265	145	232	173	24,5	265	145	309	173	29,4
<b>90L</b>	265	145	257	173	27	265	145	334	173	31,9

(..) Solo su richiesta  
 (..) Only on request  
 (..) Auf Wunsch  
 (..) Seulement sur demande  
 (..) Sólo bajo pedido

- Peso comprensivo di motore  
 - Weight with motor  
 - Gewicht mit Motor  
 - Poids avec moteur  
 - Peso con motor



Alberi / Shaft / Wellen / Arbres / Ejes				
D j6	B	b	t	f
40	80	12	43	M16
(28)	(60)	(8)	(31)	(M10)

Flange / Flanges / Flansche / Flasques / Bidas			
P	M	N f8	O
250	215	180	14
(200)	(165)	(130)	(14)

PAM	A	kg
063	55	14.6
071	55	14.7
080 - 090	86	15.3

- Peso senza motore (..) Solo su richiesta
- Weight without motor (..) Only on request
- Gewicht ohne Motor (..) Auf Wunsch
- Poids sans moteur (..) Seulement sur demande
- Peso sin motor (..) Sólo bajo pedido

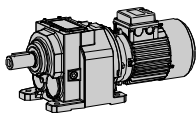
Per le dimensioni relative alla zona attacco motore (Pm, Dm, bm, tm) fare riferimento alla tabella di pag. 134.

For the dimensions concerning the motor connection area (Pm, Dm, bm, tm) please refer to the table shown at page 134.

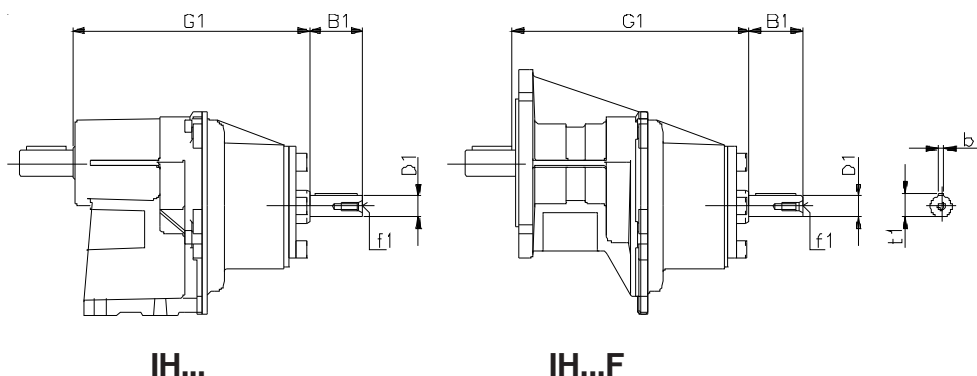
Zu den Abmessungen des Motoranschlußflansches (Pm, Dm, bm, tm) siehe Tabelle auf Seite 134.

Pour les dimensions concernant la zone de montage du moteur (Pm, Dm, bm, tm) lire SVP le tableau à la page 134.

Para las magnitudes correspondientes a la zona del motor (Pm, Dm, bm, tm) consulte la tabla de la página 134.

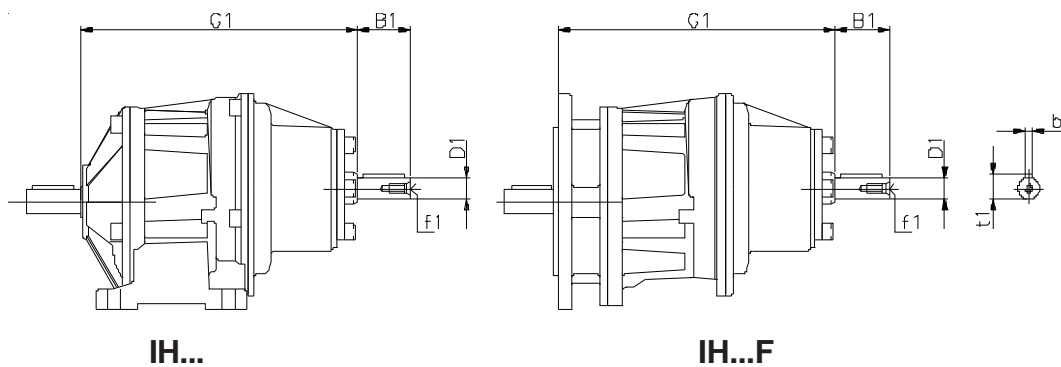


**A41 - A51 - A61**



	<b>G1</b>	<b>D1</b>	<b>B1</b>	<b>b1</b>	<b>f1</b>	<b>t1</b>
<b>A41</b>	176	16 j6	40	5	M6	18
<b>A51</b>	184.5	16 j6	40	5	M6	18
<b>A61</b>	209	19 j6	40	6	M6	21.5

**A32 - A42 - A52 - A62**



	<b>G1</b>	<b>D1</b>	<b>B1</b>	<b>b1</b>	<b>f1</b>	<b>t1</b>
<b>A32</b>	198	16 j6	40	5	M6	18
<b>A42</b>	205	16 j6	40	5	M6	18
<b>A52</b>	239	19 j6	40	6	M6	21.5
<b>A62</b>	248	19 j6	40	6	M6	21.5

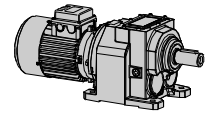
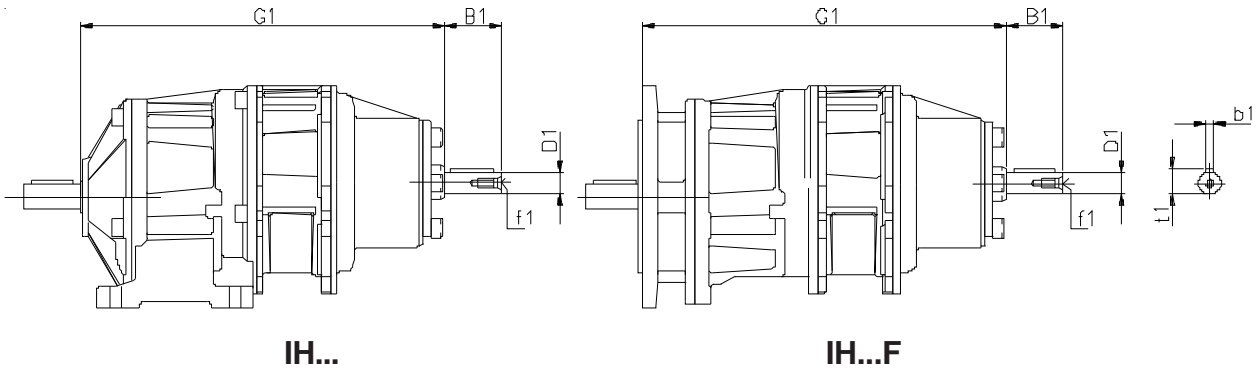
Per le dimensioni non contemplate fare riferimento al dimensionale CH/H della grandezza relativa.

For the missing dimensions, please consider the drawing of relevant CH/H size.

Die nicht angegebenen Maße sind der Maßzeichnung des CH/H der entsprechenden Größe zu entnehmen.

Pour les dimensions non spécifiées, nous vous prions de vous référer au dessin CH/H dans la taille désirée.

Para las cotas no contempladas hacer referencia a las dimensiones CH/H de los tamaños correspondientes.


**A33 - A43 - A53 - A63**


	<b>G1</b>	<b>D1</b>	<b>B1</b>	<b>b1</b>	<b>f1</b>	<b>t1</b>
<b>A33</b>	251	16 j6	40	5	M6	18
<b>A43</b>	258	16 j6	40	5	M6	18
<b>A53</b>	299	16 j6	40	5	M6	18
<b>A63</b>	308	16 j6	40	5	M6	18

Per le dimensioni non contemplate fare riferimento al dimensionale CH/H della grandezza relativa.

For the missing dimensions, please consider the drawing of relevant CH/H size.

Die nicht angegebenen Maße sind der Maßzeichnung des CH/H der entsprechenden Größe zu entnehmen.

Pour les dimensions non spécifiées, nous vous prions de vous référer au dessin CH/H dans la taille désirée.

Para las cotas no contempladas hacer referencia a las dimensiones CH/H de los tamaños correspondientes.