

## PVS® Product news



**New alu-extrusions,  
accessories and  
C-rail extrusion for  
the KANYA System**

**International protected  
brand:**



**Certification:**

**SN EN ISO 9001: 2008**

**Note**

Patente

Dieser Katalog beinhaltet Komponenten, die intern. Schutzrechten unterliegen.

Jegliche Nachahmung solcher Produkte stellt eine Rechtsverletzung dar und verpflichtet zu Schadenersatz.

Produktehaftpflicht

Die Haftung der KANYA beurteilt sich ausschliesslich nach materiellem Schweizer Recht.

KANYA übernimmt keine weitergehende Haftung und lehnt insbesondere jegliche Haftung für kopierte Erzeugnisse und/oder für eigene Konstruktionen des Anwenders aus KANYA Produkten ab.

**Edition 2010**

Kanya AG/SA/Ltd.

CH-8630 Rüti

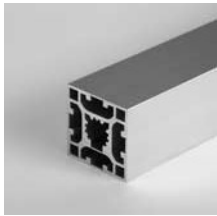
Telefon +41 (0)55 251 58 58

Telefax +41 (0)55 251 58 68 e-mail [info@kanya.com](mailto:info@kanya.com) Internet [www.kanya.com](http://www.kanya.com)

Nachdruck, auch auszugsweise, nur mit Genehmigung der KANYA AG, Schweiz.

Technische Änderungen vorbehalten.

© by KANYA AG [02/ 2010 – 6000]



**Four sided softline extrusion 40x40**

Page 4



**C-rail extrusion and slides**

Page 8/9



**Threaded plates INOX**

Page 13



**Four sided Softline extrusion 40x80**

Page 4



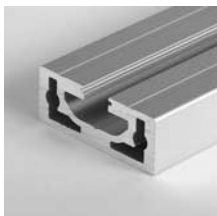
**Leveling feet**

Page 10



**Hammer nuts**

Page 13



**Slot extrusion 16x40**

Page 5



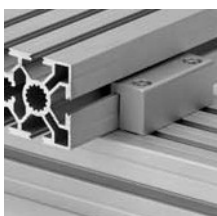
**Inserts**

Page 10



**Magnet-nuts**

Page 13



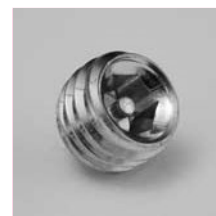
**Clamping block for the base 30**

Page 5



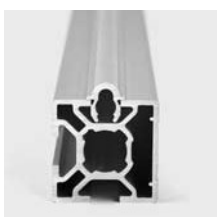
**Plastic hinges Base 20**

Page 11



**PVS-screw safe**

Page 14



**Alu rail extrusion**

Page 6



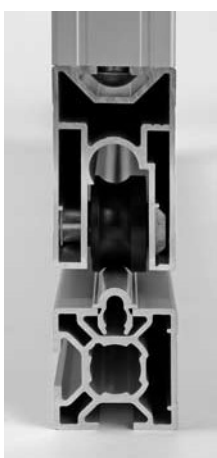
**Flat hinge**

Page 11



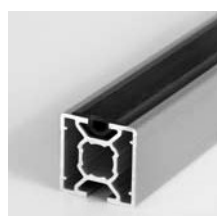
**Allen key safe**

Page 14



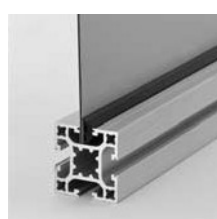
**Rollers concave and Double trolley with concave rollers**

Page 6/7



**ripped Rubber extrusion**

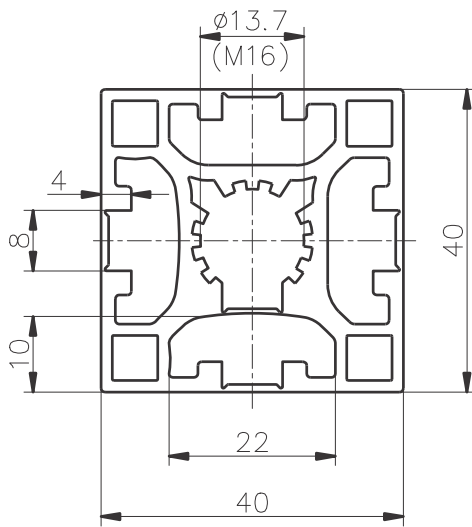
Page 12



**Clamp sealing strip base 30/20**

Page 12

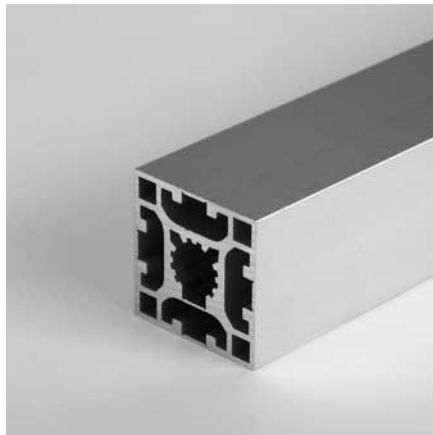
### Four sided softline extrusion 40x40 type C10-0



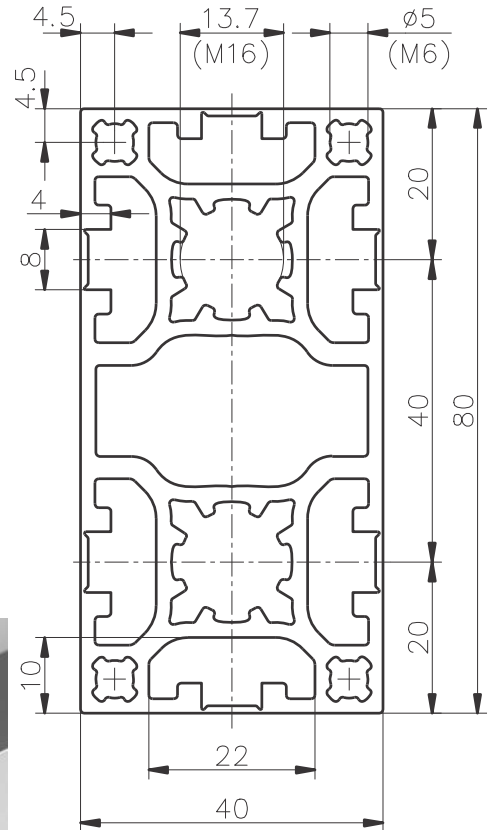
#### Application

For use in a clean room application or in the food industry, respectively there, where no slots are allowed or flat surfaces are needed.

Because of the rip off slot are connecting possibilities are guaranteed.



### Four sided softline extrusion 40x80 type C10-3



#### Application

For the same use as the C10-0, but because of the bigger size 40x80 with higher stability.

#### Technical data

$I_x = 69.79 \text{ cm}^4$

$I_y = 18.51 \text{ cm}^4$

$W_x = 17.45 \text{ cm}^3$

$W_y = 9.26 \text{ cm}^3$

Cross section area = 10.35 cm<sup>2</sup>

Weight = 2.8 Kg/m

#### Order data

#### Order number

Four sided softline extrusion 40x80

Standard length 5000 mm

C10-3-00/5000

Four sided softline extrusion 40x80

Cut to length

C10-3-02-02/...

#### Technical data

$I_x = 9.41 \text{ cm}^4$

$I_y = 9.30 \text{ cm}^4$

$W_x = 4.71 \text{ cm}^3$

$W_y = 4.66 \text{ cm}^3$

Cross section area = 5.90 cm<sup>2</sup>

Weight = 1.6 kg/m

#### Order data

#### Order number

Four sided softline extrusions 40x40

Standard length 5000 mm

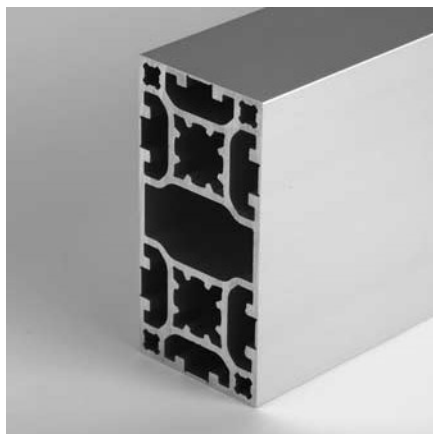
C10-0-00/5000

Four sided softline extrusions 40x40

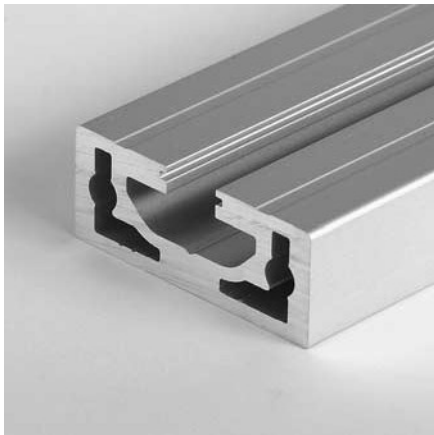
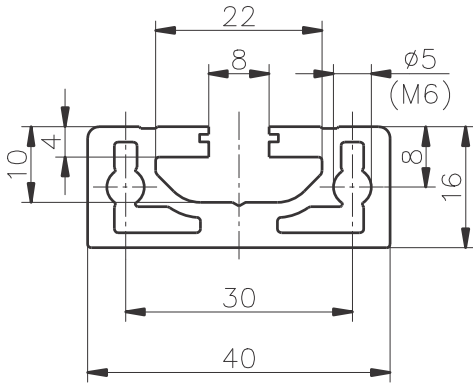
Cut to length

C10-0-02-02/...

Extra machining see main catalogue



### Slot extrusion 16x40 type C08-1



#### Application

To fix at walls or in the car industry for interior fitting or also used as a stabile guide.

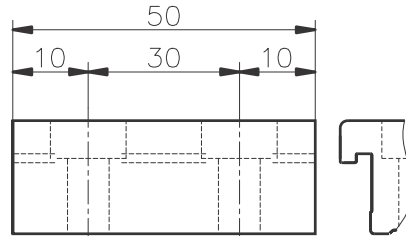
#### Technical data

Ix=	0.99 cm <sup>2</sup>
Iy=	5.73 cm <sup>2</sup>
Wx=	1.24 cm <sup>3</sup>
Wy=	2.87 cm <sup>3</sup>
Cross section area =	3.59 cm <sup>2</sup>
Weight =	1.0 Kg/m

#### Order data      Order number

<b>Slot extrusion 16x40</b>	
Standard length 5000 mm	C08-1-00/5000
Cut to length	C08-1-02-02/...

### Clamping block base 30



#### Specification

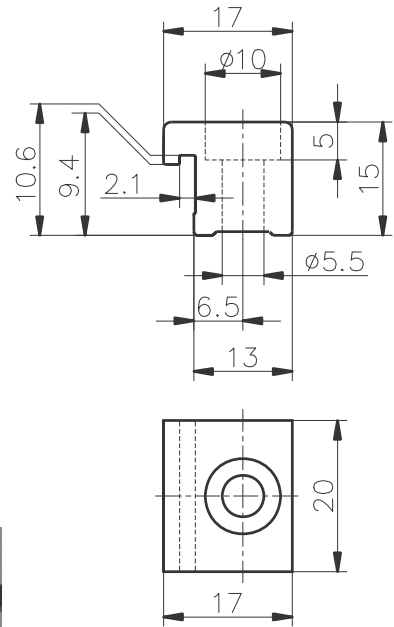
extrusion: Aluminum, matt, anodized in natural colors  
Screw: Steel zinc coated

#### Parts supplied

1/2 clamping block (s), Screw

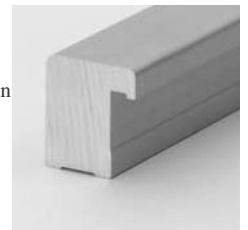
#### Order data      Order number

<b>Single clamping blocks      base 30</b>	
Cross connection	B34-01
Parallel connection	B34-11
<b>Double clamping block</b>	
Cross connection	B34-02
Parallel connection	B34-22



#### Application

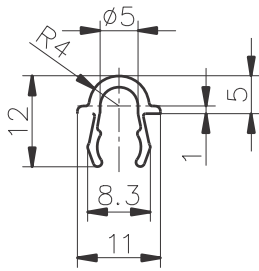
To connect two extrusions of base 30 in parallel or crossing. Two blocks are required to create a parallel connection.



#### Order data      Order number

<b>Clamping extrusions raw      extrusion base 30</b>	
Standard length 3000 mm	B34-0-00/3000
Cut of length	B34-0-02-02/...

## Alu guide extrusion type B19-8



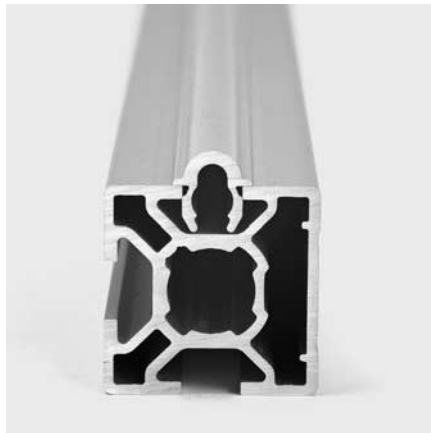
### Application

That Aluminum-guide is made to clips into all slots of base 50/40/30. The shape of the extrusion is made, that it the base 30 it is latching in. At the extrusions of the base 50/40 it fits by clamping in the slot. In addition its possible to press a steel bolt  $\varnothing$  6 in, to lock the extrusions against moving. Pros for that guiding system are:

- Quick and simple assembling for low budget
- closed slots avoids dirt deposits
- Every time expandable at already existing constructions

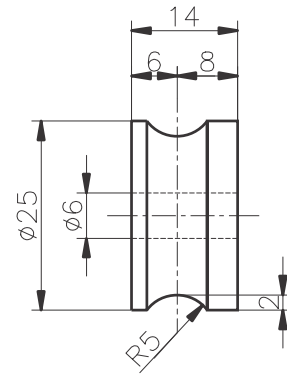
Sliding doors are easy and cost efficient producible. Used in applications, were no slot are aloud to avoid dirt deposits.

That extrusions is primary used as a rail guide for the concave rollers.



Order data	Order number
Alu guide extrusion	
Standard length 5000 mm	B19-8-00/5000
Cut ot length	B19-8-02-02/...

## Rollers concave



### Application

This ball bearing-mounted roller is mainly used in an assembly with the trolley extrusion, although it can also be attached directly to any extrusions. Together with the Alu-guide-extrusion type B19-8 an low cost rail is produced.

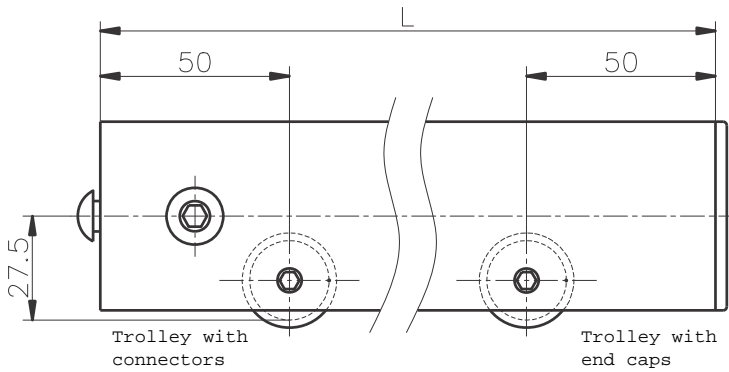
### Specification

PA 6 schwarz

2 deep groove ball bearings with cover disks F = 150 N

Order data	Order number
Roller, concave	B48-10

## Double trolley concave



### Application

The double trolley with concave rollers gives you the possibility, to produce together with the alu rail extrusion B19-8 movable mechanical support, sliding doors, usw. The length of the trolley you can define free. We recommend you, to add one roller more, from a length more than 1000mm

The double trolley you can order with more than 2 rollers.

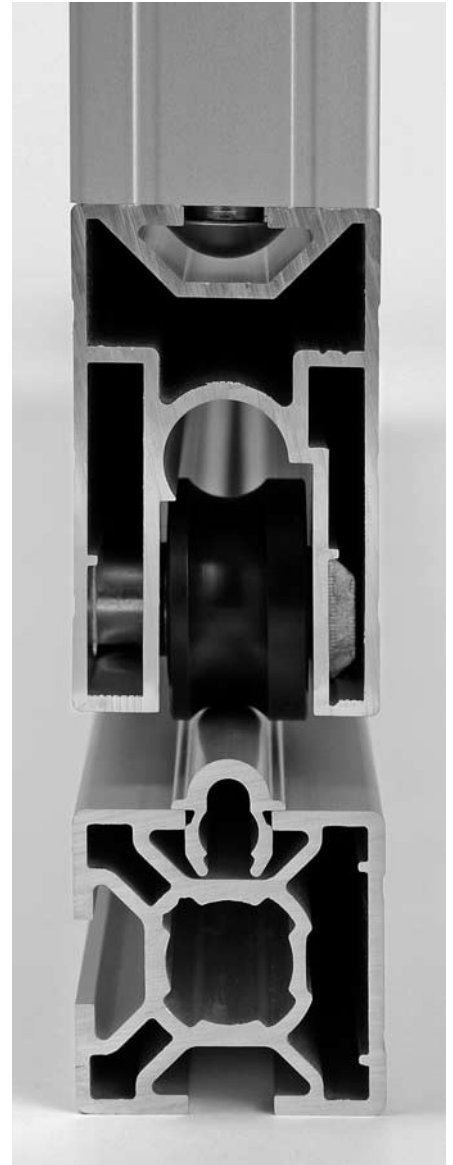
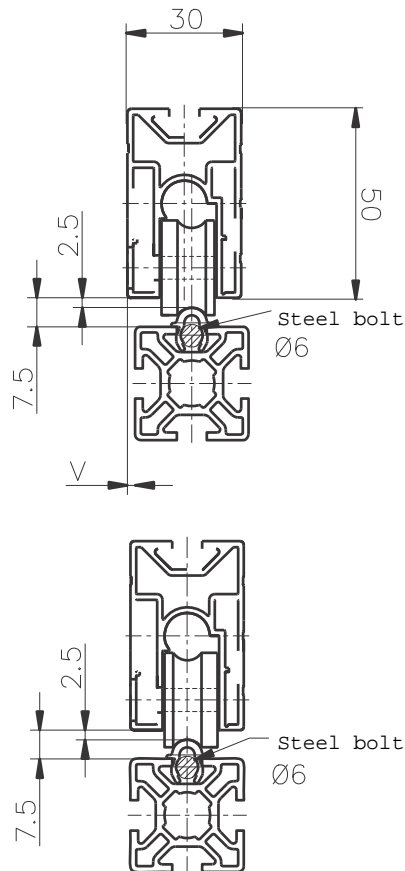
Roller-mounted support with concave rollers are on demand available (see main catalogue, roller mounted support).

### Parts supplied

Alu extrusion with  $>_2$  rollers.

PVS-connectors and/or end caps assembled.

Load: see rollers.



### Order data      Order number

Double trolley big L= ... with end cap concave

Double trolley big L= ... with PVS-connectors concave

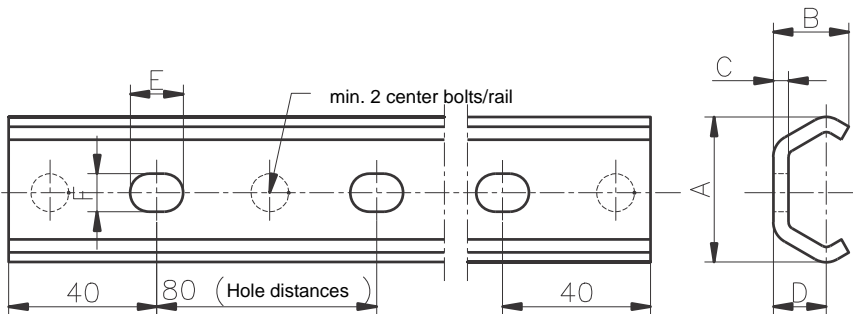
v = 0 mm

v = 2 mm

B37-12-02-02/... B37-13-02-02/...

B37-12-10-10/... B37-13-10-10/...

## C-guide rail



### Dimensions

Size	A	B	C	D	E	F	kg/m
20	19.2	10	2	7	7	5	0.47
30	29.5	15	2.5	10	8.4	6.4	0.9
45	46.4	24	4	15.5	11	9	2.3

### Application

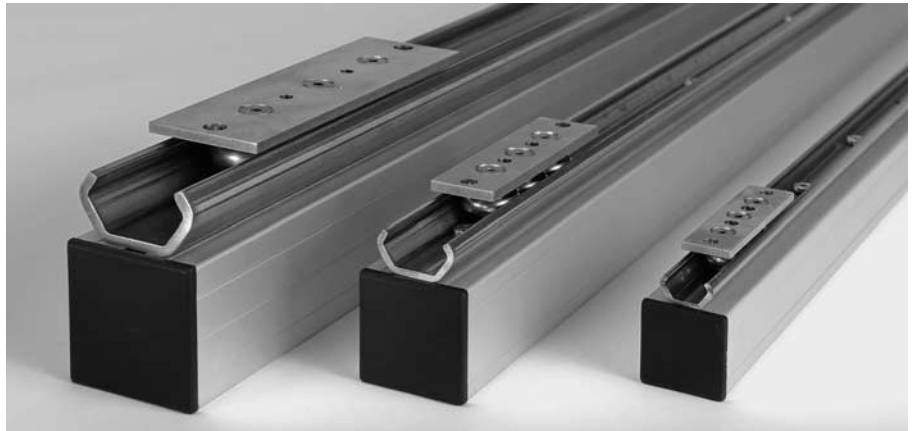
Because of the optimal shape the guide rail can be used for quiet high loads. It can be screwed directly to the extrusions. Centering bolts adjust the rail to the extrusion.

In combination with the slide are precise, cost efficient linear-guides possible. Three sizes are in our assortment.

### Specification

Steel INOX

zinc coated guide rail on demand.



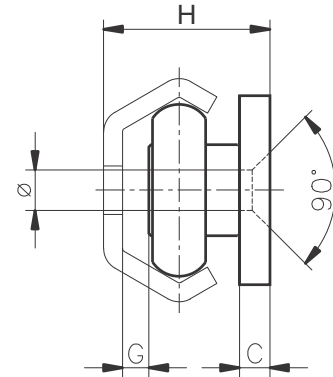
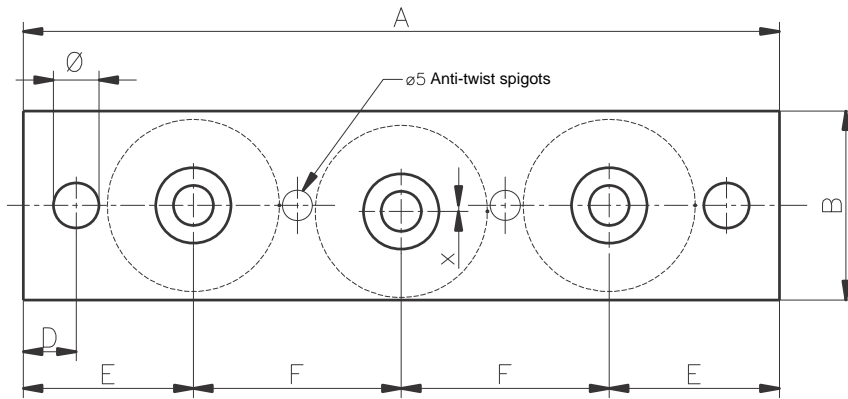
### Order data

Order data	Order number
<b>Size 20</b>	
Standard length 4000 mm	L20-01-00/4000
Cut ot length	L20-01-02-02/...
<b>Size 30</b>	
Standard length 4000 mm	L30-01-00/4000
Cut ot length	L30-01-02-02/...
<b>Size 45</b>	
Standard length 6080 mm	L45-01-00/6080
Cut ot length	L45-01-02-02/...





## Slides



### Dimensions

Size	A	B	C	D	E	F	G	H	Ø	ø	x
20	75	18	3	6	18.5	19	2.5	16	5.2	4.5	0.5
30	96	25	4	6	23.5	24.5	3.5	22	6.2	5.5	0.5
45	155	45	4	8	34	43.5	5	31	8.2	6.6	0.6

### Loads

Size	F <sub>rad</sub>	F <sub>ax</sub>
20	300N	170N
30	800N	400N
45	1600N	860N

### Application

Mainly used for horizontal and vertical guides  
Especially for drawer or sliding or stroke doors.

As well as for high adjustable workbenches or every  
where, were you have to move higher loads

### Specification

Steel INOX

Other dimensions on demand

### Technical data

Used in temperature range of : -20°C to +100° C  
max.

Speed max. : 1.5 m/s

The flat slide gives you the possibility to produce a  
very low construction height of a guide system. It is  
screwed directly on the construction extrusion. Two  
anti-twist spigots are helping to positioning the slides  
parallel to the extrusion.

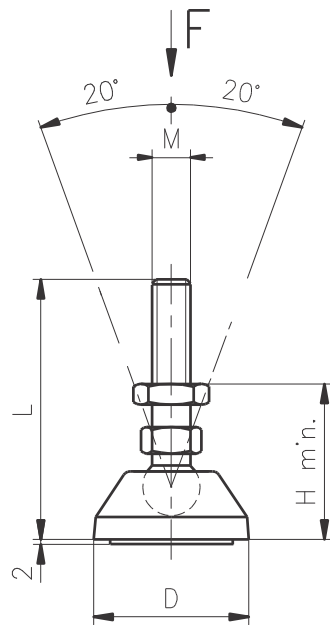
The two rollers external taking the load the marks  
showing you the contact side. With the middle roller  
you can adjust the input tension with an excentric bolt.

### Order data Order number

Slides complete incl. rollers

Size 20	L20-20
Size 30	L30-20
Size 45	L45-20

## Leveling feet



### Specification

Cup: INOX  
Bolt/locknut : INOX  
Anti-slide pad: NBR



### Specification

Cup: PA-GF schwarz  
Bolt/locknut: Steel, zinc coated  
Anti-slide pad: NBR

### Order data

#### Leveling foot stainless steel

Mx L	D	H	F	Order number
M10 x 75	39	38	3000 N	B43-21-I

### Order data

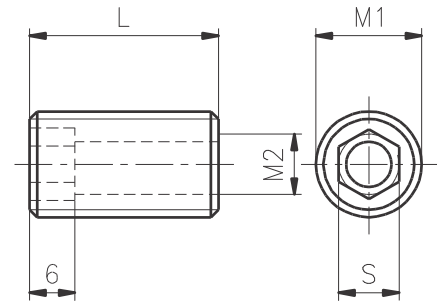
#### Leveling foot base 20

M	L	D	H	F	Order number
M6 x	60	19	25	500 N	B43-02

#### Leveling foot base 40

M16 x	155	39	40	8000 N	B43-16
-------	-----	----	----	--------	--------

## Threaded inserts



### Application

The screwed in threaded insert is primarily used to take leveling feet and caster or to fix end panels or base plates in place.

### Specification

Steel zinc coated/INOX

### Order data

M1 M2 S L  
zinc coated threaded insert

#### base 50/40

M16 / M12	10	25	A33-12
-----------	----	----	--------

Stainless steel threaded inserts

#### base 50/40

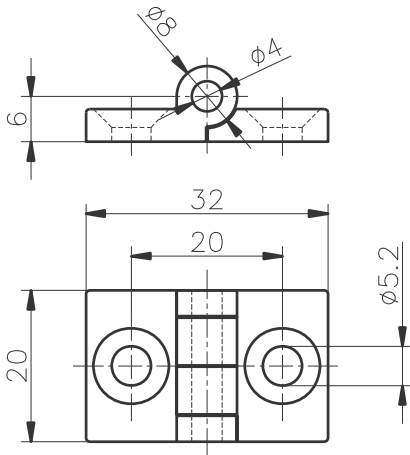
M16 / M10	10	25	A33-20-I
-----------	----	----	----------

M16 / M8	8	25	A33-28-I
----------	---	----	----------

#### base 30

M14 / M10	10	25	B33-21-I
-----------	----	----	----------

## Plastic hinge fix base 20



### Application

At filigree constructions, who are made with the base 20, these hinges can be used where if you don't have a lot of space. With the axe dimension of 20mm, both extrusions are next to each other without clearance between.

### Specification

PA-GF, black

Bolt: Steel zinc coated

### Fixing kit\*

Screw and threaded plates

### Order data                      Order number

base 20                              D60-00-PA (-S)\*

\* Art. No. for fixing kit: add to the Order number -S



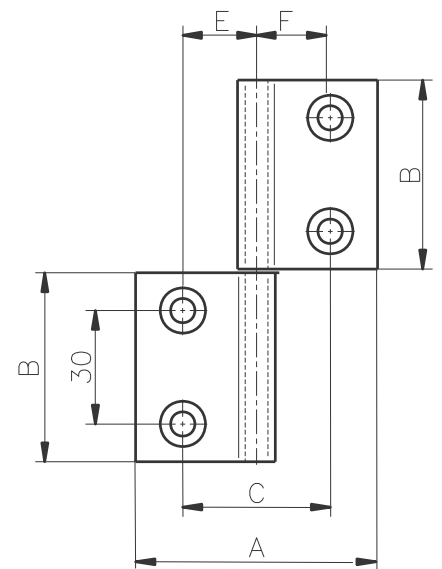
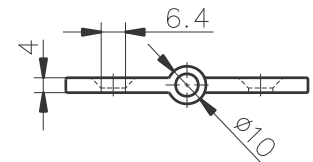
### Application

With these hinges its possible to produce doors, where the screws have no access in the closed position. The only thing where you can see is the hook of the hinge. This is important in the security point of view. The design of swing doors are much better.

### Order data                      Order number

base	A	B	C	E	F	
50	104	50	59	29.5	29.5	A60-28 (-S)*
40	84	50	50	25	25	C60-28 (-S)*
30	64	50	39	19.5	19.5	B60-28 (-S)*
50/40	94	50	54.5	29.5	25	AC6-28 (-S)*
40/30	74	50	44.5	25	19.5	CB6-28 (-S)*
50/30	84	50	49	29.5	19.5	AB6-28 (-S)*

## Flat hinge Aluminium

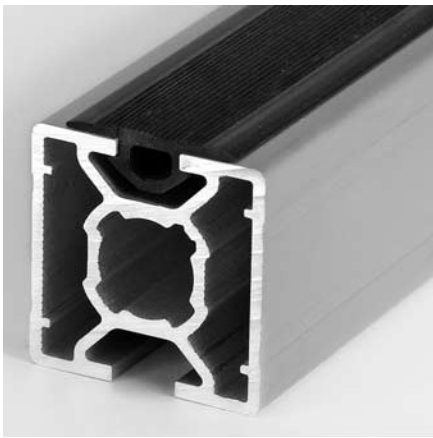
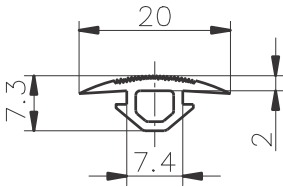


### Specification

Aluminium anodized

Bolt: Steel INOX

## Ripped rubber extrusion base 30/20



### Application

The ripped rubber extrusion can be used as a surface protecting, as Anti slide, also as an sealing strip extrusion. That extrusion fits to the slots of all cross sections of base 20 and 30.

### Specification

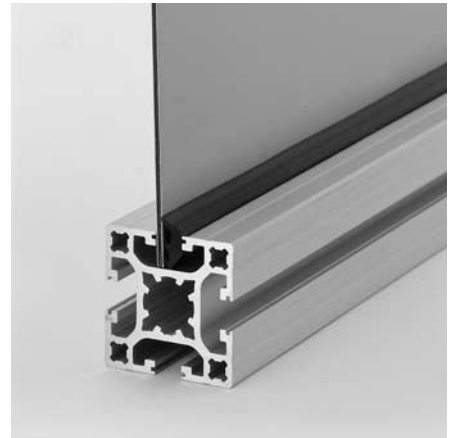
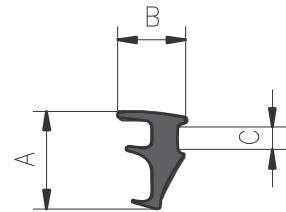
EPDM, black  
Weight: 70g/m

Order data	Order number
------------	--------------

ripped rubber extrusion

Complete roll: 50 m	D39-86
Cut ot length	D39-86-02-02/...

## Clamping sealing strip base 30/20



### Application

This sealing strip is used to stabilise and seal panels. It is fitted after the panel are inserted to the slot its for the base 20 and 30.

### Specification

Neopren-caoutchouc black, oil resistant

### Dimensions

	A	B	C
Panel 4-5mm thick	7.6	6.2	1.9

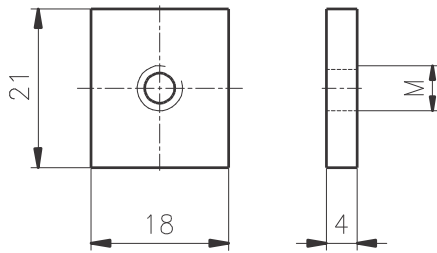
Order data	Order number
------------	--------------

Clamping sealing strip base 30/20	
standard length	
rolls of 200 m	B39-83
Cut to length	B39-83-02-02/...

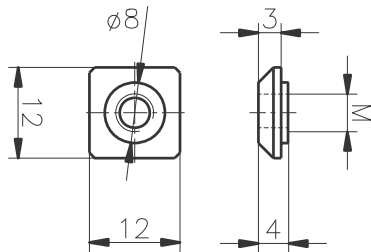
## Threaded plates

### Inox

#### base 50/40



#### base 30/20



#### Application

For attaching components. Threaded plates are inserted before assembly into the end of the extrusion slots.

#### Specification

Threaded plates: stainless steel  
Retaining spring: spring steel

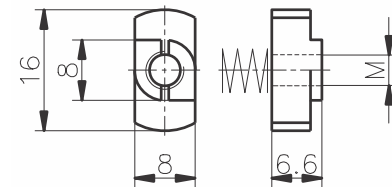


#### Order data      Order number

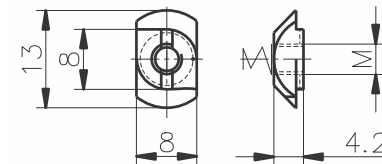
Threaded plates	extrusion base	
stainless steel	50/40	30/20
Thread M		
M3	-	D32-30-I
M4	A32-40-I	D32-40-I
M5	A32-50-I	D32-50-I
M6	A32-60-I	D32-60-I
M8	A32-80-I	-

## Hammer nuts

#### base 50/40



#### base 30/20



#### Application

The hammer nuts can be used for the same purpose as the threaded plates or spring nuts.

They can be assembled afterwards into the slot.

Because of the dimension of 8mm are short fixing distances possible. Their load-bearing capability is clearly lower than this of threaded plates and extrusion nuts.

#### Specification

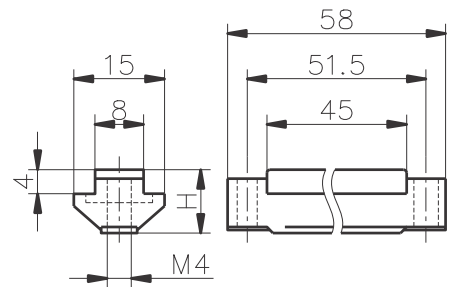
Hammer nut: Steel zinc coated  
Retaining spring: spring steel



#### Order data      Order number

extrusion base	50/40	30/20
Thread M		
M3	AC31-35	BD31-35
M4	AC31-45	BD31-45
M5	AC31-55	BD31-55
M6	AC31-65	BD31-65

## Magnet nuts



#### Application

The magnet-nuts can be inserted into the extrusions of the base 50 and 40 on the open cross section. They can be fixed on position with 2 small screws. With the magnet-nuts you can do a flat door fixing or cover a frame with powder coated steel panels, or as a tool holder.

#### Specification

Cage: Plastic  
Screw: zinc coated  
Magnet: zinc coated  
Max. temperature: until 80° C



#### Order data      Order number

Magnet-nuts	Order number
extrusion base 50	A32-86
extrusion base 40	C32-86

## PVS®-Screw Safe M12x12



### Application

Safety Screw for all PVS®-connectors of the base 50, 40 and 30 according to the PVS®-Main catalogue. The PVS-Screw safe avoids, that the PVS®-connector can be unfasten with a standard tool. Because of the machining directives or other safety regulations.

### Specification

Steel zinc coated

<u>Order data</u>	<u>Order number</u>
-------------------	---------------------

PVS®-Screw Safe	125-80-S
-----------------	----------

## Allen key for PVS®-Screw safe



### Application

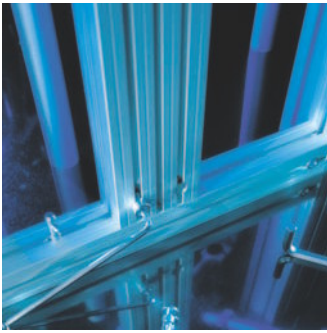
Special Allen key for the PVS®-connector with PVS®-Screw safe M12x12.

### Specification

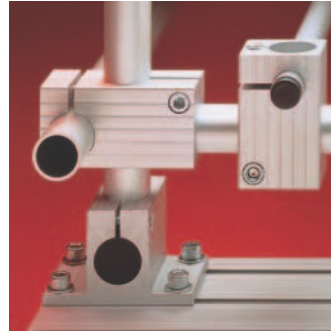
Steel zinc coated

<u>Order data</u>	<u>Order number</u>
-------------------	---------------------

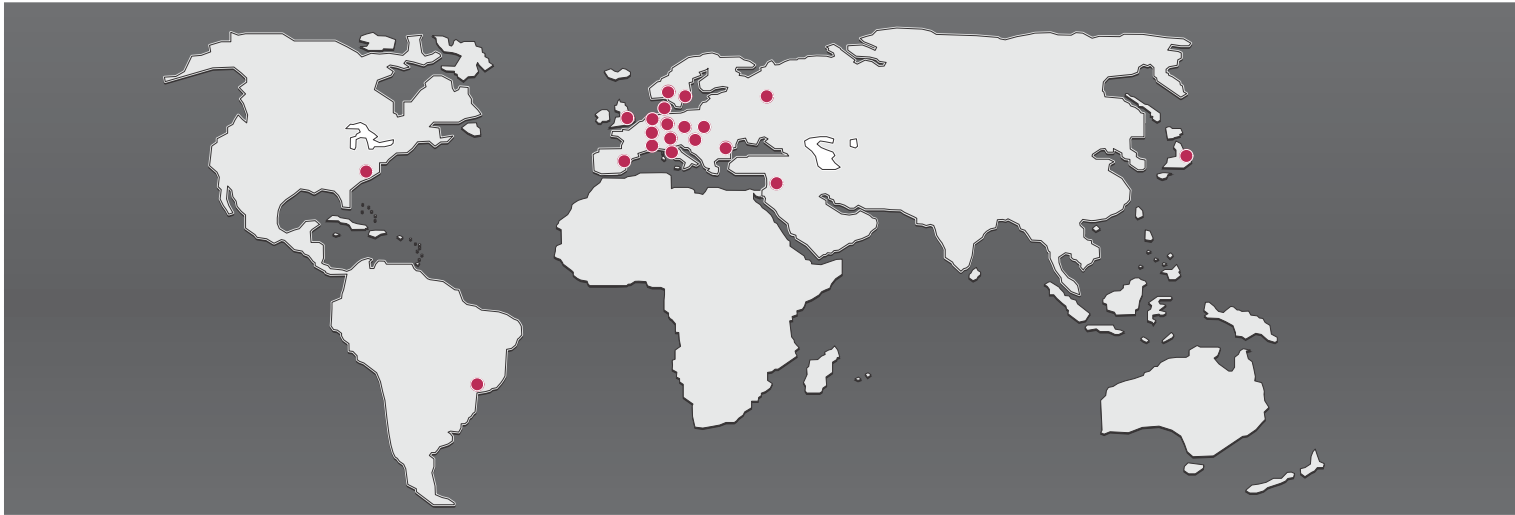
KANYA-key to PVS®-Screw safe	E97-2-S
---------------------------------	---------



**PVS®**  
The extrusion connecting system that delivers custom-made structural solutions.



**RVS®**  
The tube connecting system for adjustable applications.



**A** **VENTOR**  
**SICHERHEITSSYSTEME – AUTOMATISIERUNG**  
Falkenau 11  
A-4690 Schwanenstadt  
Tel: 0043 (0)7673 80511-0  
Fax: 0043 (0)7673 80511-40 e-mail: verkauf@ventor.at Internet: http://www.ventor.at

**B** **MAM S.A.**  
Industrie/Automation  
Rue de la Station 9– 11  
B-1435 Mont St. Guibert  
Tel: 0032-10/657 012  
Fax: 0032-10/658 791 e-mail: m.a.m.industrie@skynet.be

**BR** **ABG – INDUSTRIA COMERCIO**  
LDA.  
Av. das Araucárias, 509 – Barigüi  
CEP 83707-000  
Araucária-Paraná-Brasil  
Tel: 0055-41/643 1384  
Fax: 0055-41/643 3628 e-mail: info@kanya.com.br Internet: http://www.kanya.com.br

**CZ** **VISIMPEX a.s.**  
Seifertova 33  
CZ-750 02 P' rorov  
Tel: 00420 581 808 134  
Fax: 00420 581 808 515 e-mail: kanya@visimpex.cz Internet: http://www.kanya.cz

**D** **Nord PLZ 1.2.3.4.5 DRECKSHAGE GMBH & CO. KG**  
Walter-Werning-Straße 7  
D-33699 Bielefeld  
Tel: 0049-521/92 59-0  
Fax: 0049-521/92 59 289 e-mail: extrusione@dreckshage.de Internet: http://www.dreckshage.de

**D** **Süd PLZ 0.6.7.8.9 KANYA DEUTSCHLAND GMBH**  
Meußelsdorferstraße 25  
D-95615 Marktredwitz  
Tel: 0049-9231/603 860  
Fax: 0049-9231/603 861 e-mail: info@kanya-deutschland.de Internet: http://www.kanya-deutsch-land.de

**DK** **JJ MECHATRONIC AS**  
Industriparken 17  
DK-4450 Jyderup  
Tel: 0045-59/25 81 00  
Fax: 0045-59/25 81 01 e-mail: info@jjas.dk Internet: http://www.jjas.dk

**ESP** **IBALTEC SISTEMAS, S.L.**  
C/ Josep Soler, 74-76 bjs.  
E - 08310 ARGENTONA (Barcelona)  
Tel: 0034-93/756 11 53  
Fax: 0034-93/797 40 34 e-mail: info@ibaltec.com Internet: http://www.ibaltec.com

**F** **BERNAY AUTOMATION S.A.**  
B.P. 451-1, Rue de Menneval  
F-27304 Bernay Cedex  
Tel: 0033-232/473 510  
Fax: 0033-232/430 188 e-mail: info@bernay-automation.com Internet: http://www.bernay-automat-ion.com

**GB** **THINKING SPACE SYSTEMS Ltd.**  
Unit 2, The Quadrangle  
Abbey Park Industrial Estate  
Romsey  
Hampshire SO51 9DL, UK  
Tel: 0044-(0)1794/51 66 33  
Fax: 0044-(0)1794/51 66 32 e-mail: kanya@thinking-space.com Internet: http://www.kanya-uk.co.uk

**I** **TECNO-CENTER S.R.L.**  
C.so Lombardia, 41  
I-10078 Venaria Reale (TO)  
Tel: 0039-011/455 11 21  
Fax: 0039-011/455 75 95 e-mail: info@tecno-center.it Internet: http://www.tecno-center.it

**IL** **CONLOG LTD.**  
7 Leshem St. P.O. Box 3571  
IL-Petach-Tikva 49134  
Tel: 00972-3/926 95 95  
Fax: 00972-3/923 33 67 e-mail: conlog@conlog.co.il Internet: http://www.conlog.co.il

**J** **MIWA CO. LTD.**  
No. 632, SEKO 2-chome  
Moriyama-ku  
J-Nagoya 463 0068  
Tel: 0081-52/795 60 11  
Fax: 0081-52/795 33 66 e-mail: postmiwa@miwa-inc.co.jp Internet: http://www.miwa-inc.co.jp

**NL** **TEVEL COMPONENTS BV**  
Endepoelstraat 4  
NL-6942 GL Didam  
Tel: 0031-(0)316/342 815  
Fax: 0031-(0)316/343 086 e-mail: components@tevel.nl Internet: http://www.tevel.nl

**PL** **TABAL Sp. J.**  
ul. Energetyków 14 PL-20-468  
Lublin Tel: 0048-(0)81/749 09 11  
Fax: 0048-(0)81/749 01 28 e-mail: kanya@tabal.pl Internet: http://www.tabal.pl

**RO** **SC Prod Marcos SRL**  
Str Lunga Nr 68  
555300 Cisanadie/Sibiu, ROMANIA  
Tel: 0269 206230/1/2/4/6  
Fax: 0269 206235 e-mail: info@prodmarcos.ro Internet: http://www.kanya.ro

**RU** **SERVOTECHNICA ZAO**  
22, Vyborgskaya str.  
125130 Moscow, Russia Tel: 0007 495/797 8866  
Fax: 0007 495/450 0043 e-mail: info@servotechnica.ru Internet: http://www.servotechnica.ru

**S** **EIE MASKIN AB**  
Box 7  
124 21 Bandhagen  
Tel: 0046-8/727 88 00  
Fax: 0046-8/727 88 99 e-mail: eie@eie.se Internet: http://www.eie.se

**USA** **A-LINE CORPORATION**  
1303 Upper Asbury Ave Charlotte  
NC 28206 – USA Tel: 01-704/332-1059  
Fax: 01-704/332-4729 e-mail: sales@aline1.com Internet: http://www.aline1.com

## Head quarter

KANYA AG/SA/Ltd. | Neuhofstrasse 9 | CH-8630 Rüti | Switzerland  
Tel.: +41 (0)55 251 58 58 | Fax: +41 (0)55 251 58 68 | info@kanya.com | www.kanya.com

**Highest flexibility**

Owing to our multi-functional extrusions PVS and fitting RVS system. Nearly no borders are set to the application possibilities.

**Innovative system approaches**

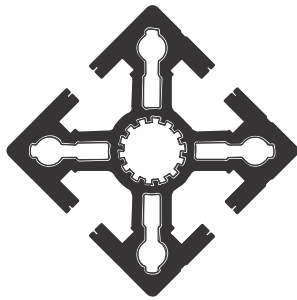
based on our 35 year old experience – with innumerable produced applications and expert customer advisory service.

**Short delivery time**

Owning our considerably stock of extrusions, tubes and accessories we can provide you with short delivery times.

**Best service- und quality - standards**

based on optimized processes, self developed IT-Systems and well educated coworkers.



**Connecting Solutions**

Kanya AG/SA/Ltd.  
Neuhofstrasse 9  
CH-8630 Rüti  
Schweiz

Telefon +41 (0)55 251 58 58  
Telefax +41 (0)55 251 58 68

e-mail [info@kanya.com](mailto:info@kanya.com)  
Internet [www.kanya.com](http://www.kanya.com)

Nachdruck, auch auszugsweise, nur mit Genehmigung der KANYA AG, Schweiz. Änderungen vorbehalten.  
Copyright KANYA AG, Schweiz

ISO 9001:2008