

„DOS Enabler“



Serial driver for programs written for DOS(16-bit), that uses direct serial I/O and Interruptsharing .

Important ! Use this utility only with WIN2000® and WIN NT4.0®

You should have **Administrator** rights.

Installation :

Step 1)

Run the self-extracting file **DOSena.exe** in a directory of your choice.

Start **ksetup.exe** for the installation of the **Control Center** and the **serial driver**.

Reboot your system. The driver supports the **COM1 and COM2** serial interfaces with the most popular adjustments. The driver is **predefined** for COM1 and COM2 serial interfaces and no changes are necessary.

Registered programs are **report.exe** and **reps504.exe**

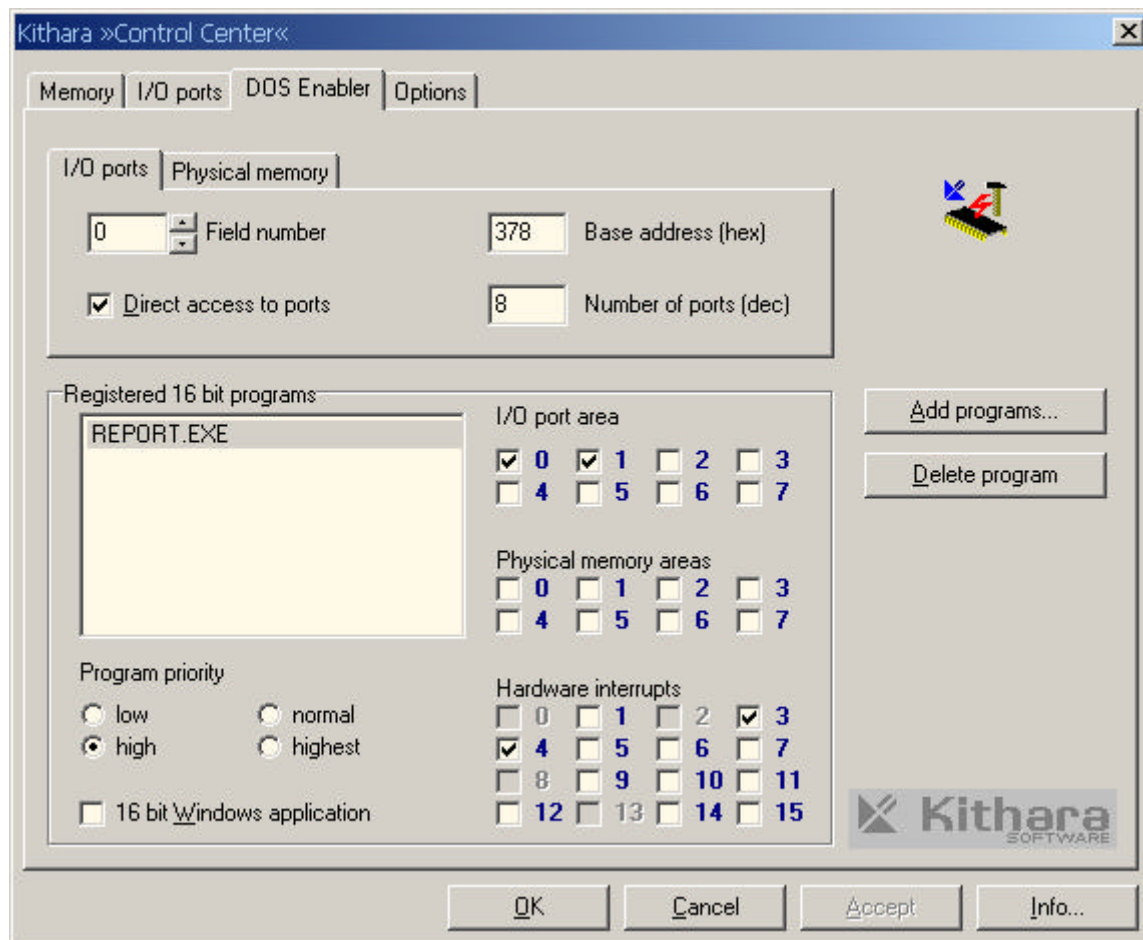
Uninstall :

Step 1)

The software can also be uninstalled under **Start ->System Control ->Software**

Control Center:

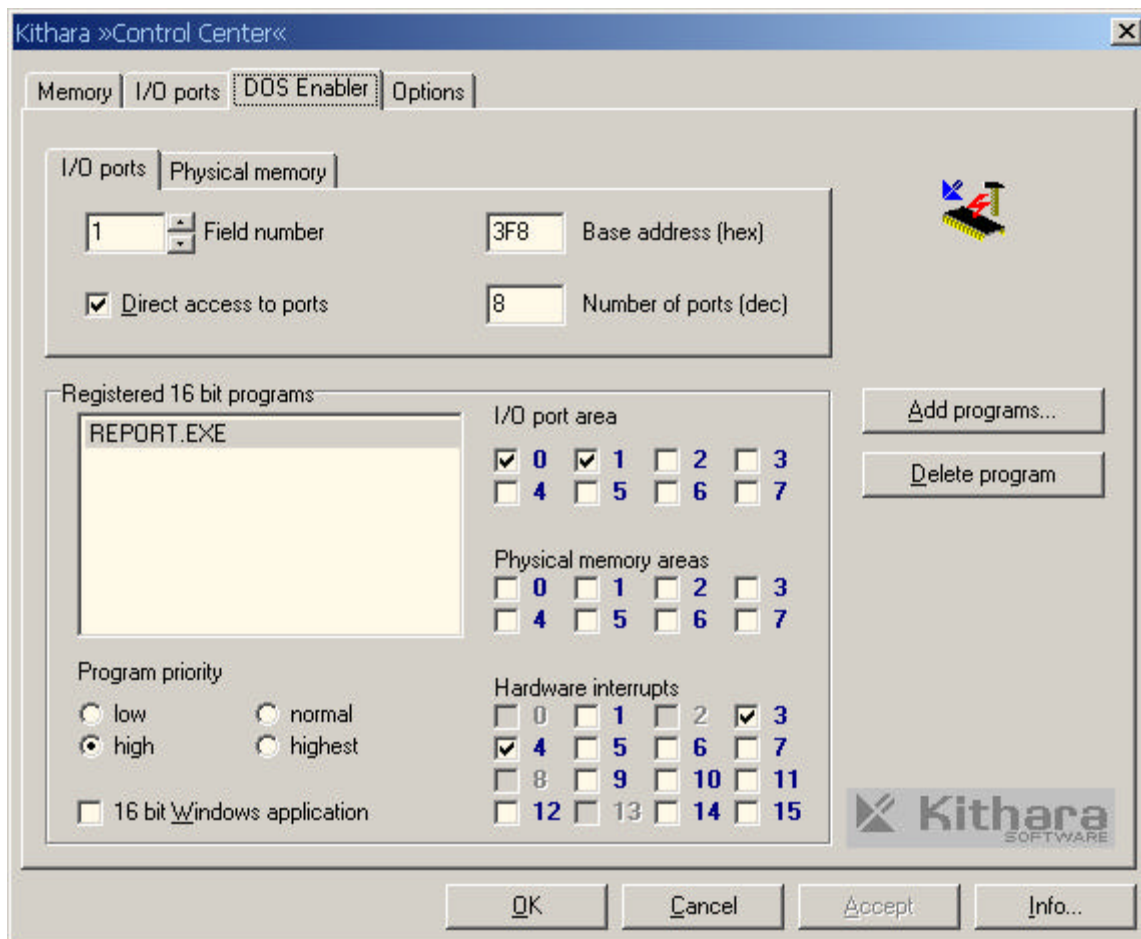
The Kithara Control Center is available under Start -> **System Control -> Kithara CC**



I/O Ports
 Field Number 0 : 378
 Direct access: enabled
 Number of ports: 8

 Field Number 1 : 3F8
 Direct access: enabled
 Number of ports: 8

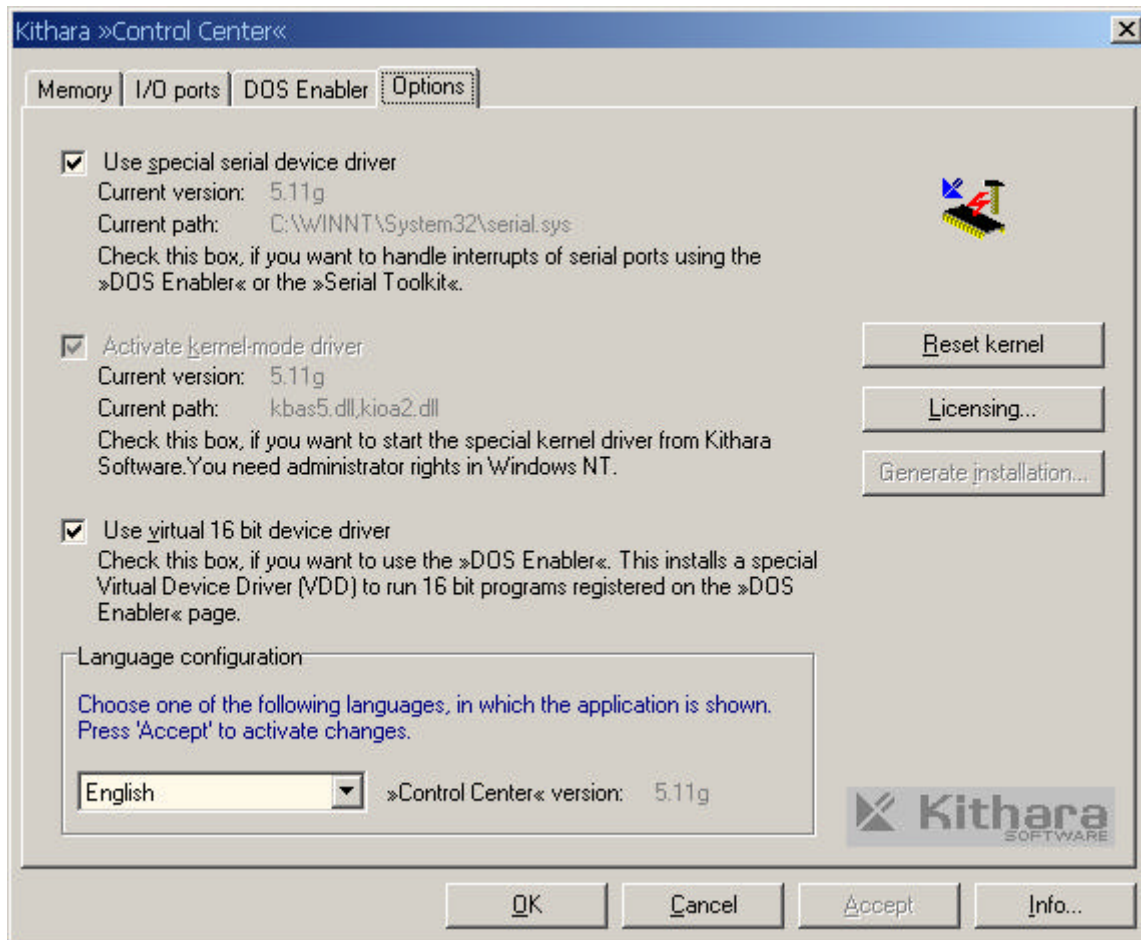
 I/O Port area: 0,1
 Hardware interrupts: 3,4
 Program priority: high
 Registered program: **report.exe or reps504.exe**



Field Number 1 : 3F8
 Direct access: enabled
 Number of ports: 8

 I/O Port area: 0,1
 Hardware interrupts: 3,4
 Program priority: high

 Registered programs: report.exe or reps504.exe



Enable: Use special serial device driver
 Enable: use virtual 16 bit driver

Extended support under
 Fritz Kübler GmbH Zähl- und Sensortechnik
 Email : helmut.koch@kuebler-gmbh.de
 WEB-Site: www.kuebler-gmbh.de