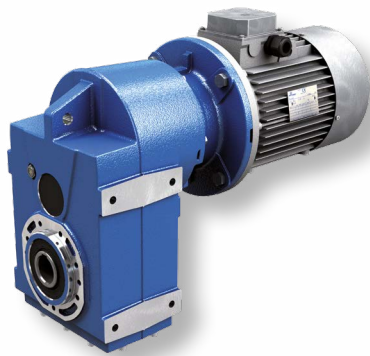

NEW



Shaft-mounted Gear reducers



MOTOVARIO[®]

HEART OF MOTION

a TECO Group company

Features



Specifically designed for applications involving conveyors or augers, these units are also suitable for a wide variety of industrial fields. S-series shaft-mounted gear reducers, available in cast iron casing only, sizes from 050 to 150, offer a large range of reduction ratios and are fully efficient in any working conditions. **The new S Series includes two new sizes, 140 and 150**, to extend the shaft mounting to heavier applications.

Sizes:

050 - 060 - 080 - 100 - 125

- Universal casing
- Versions:
 - S... C Foot-flange mounting / Hollow shaft
 - S... D Foot-flange mounting / Solid shaft
 - S... L Foot-flange mounting / Shrink disc shaft
- Gearing with 2 and 3 reduction stages
- Modularity
- Gears hardened and tempered with shaved or ground profile
- Cases in EN-GJL-200 grey cast iron for high strength and optimized with FEM analysis
- Excellent mechanical strength
- Load capacity calculated to ISO 6336, DIN 3990 and AGMA 2001
- Painted with RAL 5010 blue epoxy-polyester powder according to DIN 1843
- ATEX versions available 2GD/3GD

Sizes:

140 - 150

- Universal casing
- Versioni:
 - S... C Foot-flange mounting / Hollow shaft
 - S... L Foot-flange mounting / Shrink disc shaft
- Gearing with 2 and 3 reduction stages
- Gears hardened and tempered with ground profile
- Cases in EN-GJL-200 grey cast iron
- Load capacity calculated to ISO 6336, DIN 3990 and AGMA 2001
- Gearboxes supplied without lubricant
- Painted with RAL 5010 blue epoxy-polyester powder according to DIN 1843

Range



S 050-060-080-100-125



S 140-150

	*Ø [mm]	Output torque M ₂ [Nm]	Ratio	
		Max	Min	Max
S050	30	350	8,63	314,21
S060	35	600	8,00	267,16
S080	40 - 45	1.000	7,34	360,58
S100	45 - 50	1.600	8,06	394,69
S125	55 - 60	3.000	8,48	238,93
S140	65 - 70	4.800	4,11	273,41
S150	80 - 90	9.500	4,06	253,35

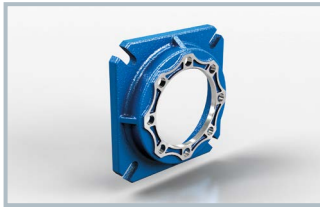
* The diameter of the low speed shaft can change according to the number of stages of the gear reducer

- Power from 0,12 kW up to 45 kW with three phase 4 pole motors
- Reduction ratios between 4,06 and 394,69
- Torque max 9.500 Nm
- Admissible radial loads max 30.000 N

Accessories



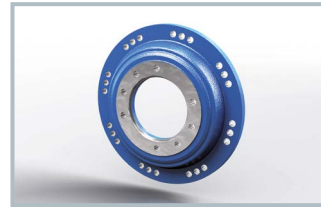
Output Flanges



FA



FB-FC



FG

	FA	FB	FC	FG
S050	•	•	/	/
S060	•	•	/	/
S080	•	•	•	/
S100	•	•	•	/
S125	•	•	•	/
S140	/	/	/	•
S150	/	/	/	•

• Available/Not available

Other Accessories

S050-S125

S140-S150

• Double solid output shaft	/	•
• Single solid output shaft	•	•
• Torque arm	/	•
• Reaction bolt	•	•
• Shrink disk	•	•
• Backstop device	•	•
• Assembly/disassembly kit	•	/
• Reinforced output seals	•	/
• Viton seals	•	•

• Available/Not available

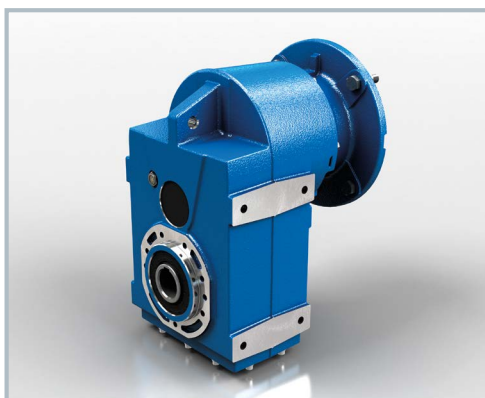


MOTOVARIO[®]

HEART OF MOTION

a TECO Group company

Versions



S 050-125

Fitted for motor coupling (IEC)

PS 050-125

Fitted for motor coupling
(IEC/NEMA) with elastic joint



S 140-150

Fitted for motor coupling
(IEC/NEMA)



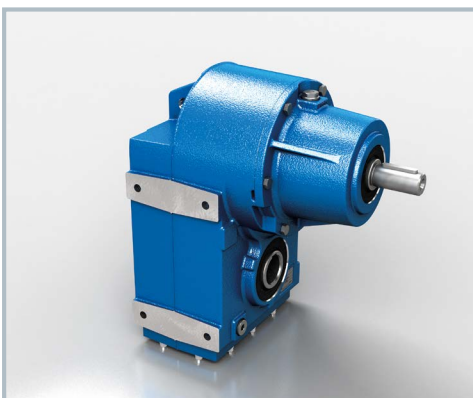
CS 050-125

With compact motor (IEC)



S 140-150

With motor (IEC)



IS 050-125

With input shaft



IS 140-150

With input shaft



Subsidiaries

Germany

France

Spain

United Kingdom

Denmark

USA

China

India



Italy

Australia

Benelux

Bulgaria

China

Finland

France

India

Ireland

Israel

Lithuania

Malaysia

Netherlands

Poland

Portugal

South Korea

Spain

Sweden

Turkey

United Kingdom

Ukraine

USA