



cymex® 3.0 - CyberMotionExplorer
Software for calculating drivetrains



alpha

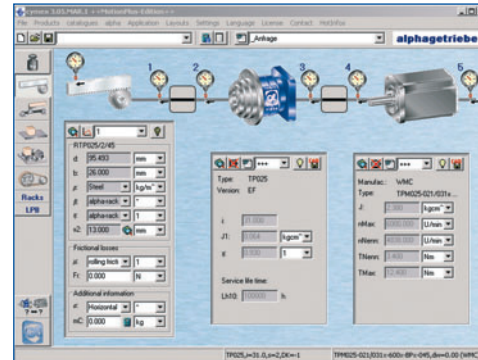
a WITTENSTEIN AG company

cymex® 3.0 – a simple concept

cymex, the calculation software from Alpha Getriebebau GmbH, revolutionized servodrive design when it was first unveiled to the market five years ago. alpha recently released cymex® 3.0 – the new version that sets further impressive benchmarks in software functionality and handling.

With two distinct program options, alpha has succeeded in satisfying the needs of a broad spectrum of users.

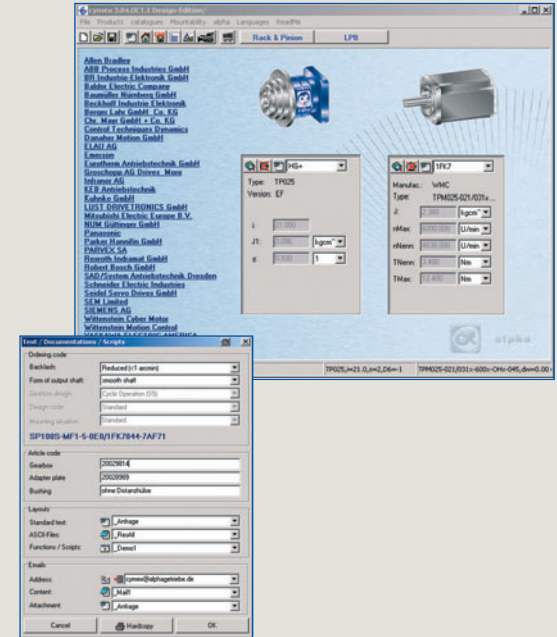
- The **Design-Edition** is a simple, intuitive tool that calculates all important information about the required gearhead/motor combination exceptionally fast.
- The **Motion+ Edition** offers a more advanced alternative for calculating detailed drivetrains while integrating the complete functionality of the Design-Edition.



cymex® 3.0 – Design Edition ...

... includes all alpha products with all selection-relevant information as well as the complete **cymex** motor database. The geometric compatibility of the gearhead and motor can be checked. **cymex** generates the entire information needed by the design engineer online – from operating instructions through assembly videos, to CAD data in a variety of formats. The selected components can now be ordered easier than ever with just a few simple mouse clicks.

The **cymex 3.0 Design-Edition** is freely available from
www.alphagear.com (USA)
www.alphagearheads.com (UK)
www.alphagetriebe.com



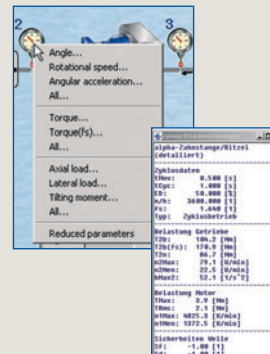
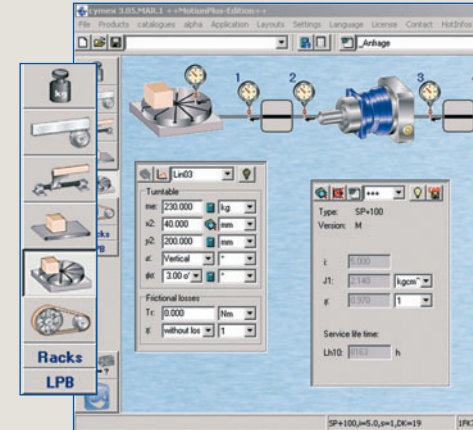
cymex® 3.0 - Motion+ Edition

The cymex Motion+ Edition is the outcome of alpha's continued systematic development of software for calculating complete drivetrains

The principle: Free up your time for other important design tasks! Standard applications (such as belt drive or rack and pinion) can be customized with your application data to automatically suggest a gearhead, and motor combination, thus minimizing the effort necessary to calculate a complete drivetrain.

All relevant results can be viewed at any time with the Calculation Results Monitor. This new function enables all key data to be visualized even more conveniently and in even greater detail than on the virtual dial gauges.

The database contains all alpha gearheads as well as numerous other components for belt drives and rack-and-pinion drives. With around 5000 motors from 45 manufacturers, our motor database still holds the record as the largest library of its kind anywhere in the world.

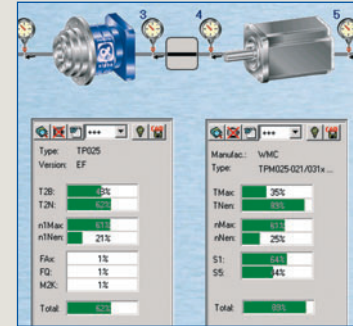


OK	Typ	FName	alpha	Lambda	Thms	aTM
α<50	All	All	All	All	All	All
α<60	1476	SP-A5 0700 020	BOSCH 147	3.56	229	50
α<80	1477	SP-A5 0700 030 Bremse/brake	BOSCH 148	3.19	229	50
α<90	1572	BM5ARL d5 oetg (2000)	Bufl	69	4.79	345
α<100	1573	BM5ARL d5 oetg (3000) Bremse/brake	Bufl	69	3.76	345
α<100	1574	BM5ARL d5 oetg (5000)	Bufl	69	5.95	279
α<120	1575	BM5ARM d5 oetg (3000) Bremse/brake	Bufl	63	4.43	279
α<150	1577	BM5ARF d5 oetg (3000) Bremse/brake	Bufl	116	5.46	204
	1729	190-UMC-2000-100	CT-Gie 145	5.86	197.3	59
TMax	1345	F 6300-3000-13980DM-075	Electroc 275	5.61	49.8	223
nMax	1346	F 6300-3000-1398DM-100	Electroc 340	5.61	49.8	223
nNenn	2150	ALPHA 40F-2000-0	FANUC 224	4.15	270	44
	2151	ALPHA 40F-2000-0	FANUC 153	4.15	270	44
M4G7	2024	MAC112C-1500K-1-0	INDRAC 207	5.95	94	124



Visualization:

cymex® 3.0 also breaks new ground when it comes to result visualization. Bar charts are used to represent all loads on the gearhead and motor relative to the permissible limit values. Users are able to instantly assess the suitability of any gearhead/motor combination.



The Motion Profiler

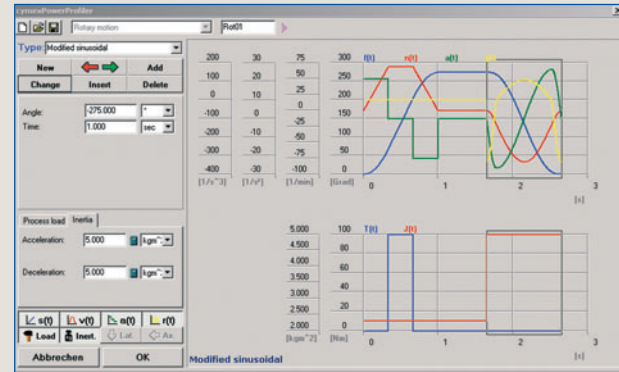
Loads and torques can now be defined together with the motion profile as time-dependent variables. External motion files can be imported and processed with the cymex functionality.

Other advantages of cymex® 3.0:

- Interface to MS-Office
- Hot topics online
- Monthly updates
- Wealth of additional features

Please contact your local alpha sales representative for **Motion+ Edition** pricing.

TO	a(T0)	TN	a(TN)	nMax	abrM
[h]	[s]	[h]	[s]	[1/min]	[s]
69	85	20.6	147	3000	20
69	85	39.6	148	3000	20
115	51	85	69	3600	17
115	51	85	69	3600	17
93	63	70	83	3600	17
93	63	70	83	3600	17
68	85	50	116	3600	17
68.7	88	40	145	2000	30
24.9	232	21	275	3000	20
24.9	232	17	340	3000	20
38	153	26	224	2000	30
56	104	38	153	2000	30
28	207	0	0	2600	23
37	314	0	0	3000	13



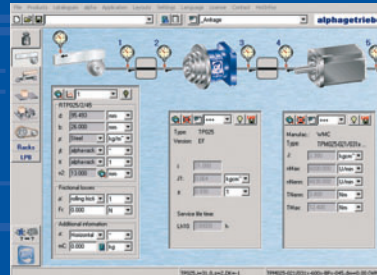
alpha

a WITTENSTEIN AG company

cymex® 3.0 - CyberMotionExplorer

cymex® 3.0 a product of Alpha Getriebebau GmbH.

The Cyber Motion Explorer provides valuable support for calculating complete drivetrains and selecting the optimum gearhead.



alpha

alpha getriebebau GmbH

Walter-Wittenstein-Straße 1 · 97999 Igersheim / Germany

Tel. +49 (0) 79 31/4 93-0 · www.alphagetriebe.com · info@alphagetriebe.com

a WITTENSTEIN AG company