

RP+ – The high-precision powerhouse



RP+

Product highlights

- Max. torsional backlash [arcmin] ≤ 1
- High axial and radial forces
- Easy installation
- Optimized for rack and pinion applications

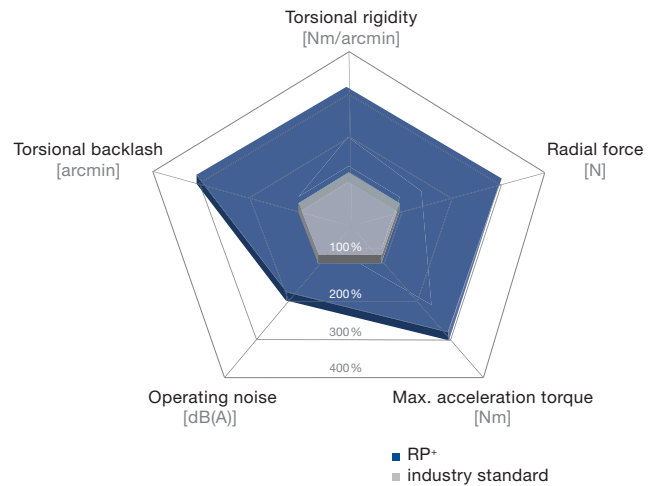
This gearbox series sets standards in terms of power density, modularity and easy installation. It is used in all applications where the individual requirements far exceed what has previously been possible. RP+ gearboxes combine all the advantages of the familiar gearbox series:

- Reduced backlash of ≤ 1 arcmin
- Maximum power density
- Extremely smooth-running thanks to helical toothing
- Maximum positioning accuracy and world-class lifespan

The RP+ impresses with maximum power density

- If your drive requires maximum performance
- If you value world-class engineering
- If you require an even more compact system

The RP+ compared to the industry standard



RP+ with rack and pinion

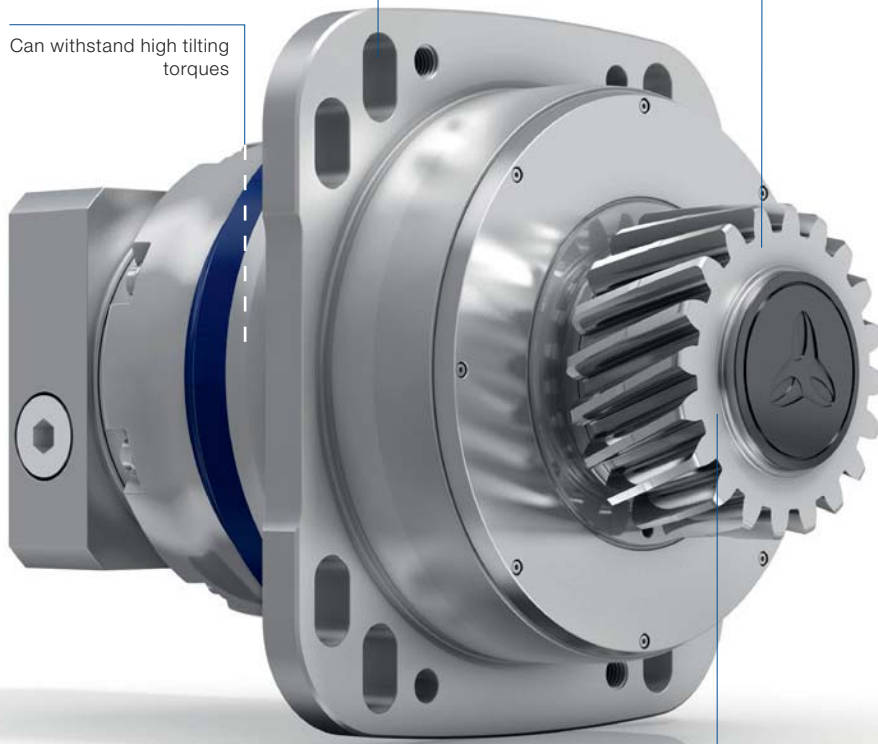


RPK+ with hypoid angle section

Integrated slots reduce the design and installation requirements to a minimum

Can withstand high tilting torques

Application adapted perfectly for a maximum service life



RP+

Optimized for rack and pinion applications

Further information is available in the "alpha Linear Systems" catalog or online at www.wittenstein-alpha.com



RP+ available as RPM+ actuator version (series in an even more compact design)

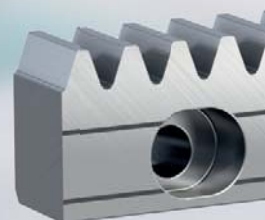
RP+ – Product features

Your benefits

	RP+ MF-Version / MA-Version
Features	
Power density	++++
Positioning accuracy (e.g. clamped drives)	++++
Highly dynamic applications	+++
Torsional rigidity	++++
Space-saving design	+++
Easy assembly	++++

Technical data

		RP+ MF-Version / MA-Version
Ratio	i	3 – 220
Number of sizes		5
Max. torsional backlash	j_t [Nm/arcmin]	Standard ≤ 1
		Reduced ≤ 1
Max. torque	$T_{2\alpha}$ [Nm]	540 – 10450
Max. input speed	n_{1Max} [rpm]	6250
Max. tilting moment	M_{2KMax} [Nm]	34000
Torsional rigidity	C_{t21} [Nm/armin]	123 – 2000



Options

	RP+ MF-Version / MA-Version
Output type	
Flange	✓
System output with pinion	✓
Input type	
Motor-mounted version	✓
Design	
Food-grade lubrication ^{a) b)}	✓
Optimized mass inertia	✓
Accessories	
Rack	✓
Pinion	✓

a) Power reduction: Technical data available on request

b) Please contact WITTENSTEIN alpha

