

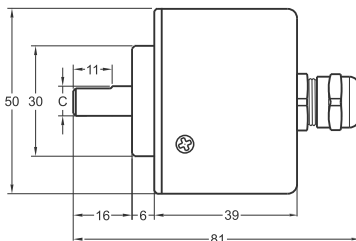
Magnetic Incremental Encoder

- 50 mm case diameter
- Magnetic incremental encoder
- 4 - 8 - 16 - 20 - 25 - 32 - 40 - 50 - 64 - 80 - 100 - 125, 128 - 160 - 200 - 250 - 256 - 400 - 500 - 512 ppr.
- IP 54 protection

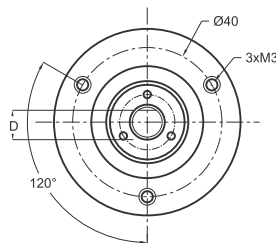


Technical Specifications

Type of Measurement	Magnetic incremental contactless
Resolution	4 ... 512 ppr.
Output Channels	A,B,Z or A,Ā, B,Ī, Z,Ż
Output Type	Push-Pull, TTL Linedriver or HTL Linedriver
Supply Voltage	8 - 24 VDC (standard) or 5 VDC (optional)
Power Consumption (without load)	< 40 mA (24 VDC)
Electrical Connections	2.5 m cable (standard)
Max. Permissible Shaft Loading	Radial: 100 N Axial: 60 N
Max. Speed	3500 rpm
Shaft Diameter	Ø6 - 8 - 10 mm
Shaft Material	Stainless steel
Case Diameter	Ø50 mm
Case Material	Aluminium / Steel
IP Degree	IP 54
Operating Temperature	-20°C ... +80°C
Storage Temperature	-30°C ... +90°C



Shaft Type / Axial

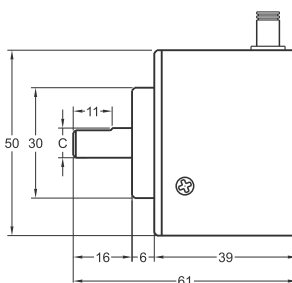


Push-Pull / TTL Linedriver Cable Output

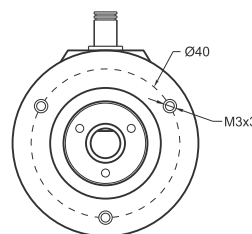
+V	: Brown
0V	: White
GND	: Shield
Ch A	: Yellow
Ch B	: Green
Ch Z	: Gray
Ch A inv.	: Blue
Ch B inv.	: Red
Ch Z inv.	: Pink

HTL Linedriver Cable Output

+V	: Brown
0V	: White
GND	: Shield
Ch A	: Yellow
Ch B	: Green
Ch Z	: Gray
Ch A inv.	: Blue
Ch B inv.	: Red
Ch Z inv.	: Pink



Shaft Type / Radial



MRI 50	R (shaft)	
	C	D
	Ø6 mm	5,50 mm
	Ø8 mm	7,30 mm
Ø10 mm	9,00 mm	

Model	Case Diameter	Case Type	Shaft Diameter	Output	Resolution	Output Channels	Supply Voltage	Connector / Cable	Cable Output
(example) MRI	50	A	R6	HLD	500	Z	V2	2M5	R
MRI	50mm	A : Clamping flange AW: Water proof	R6 : 6mm R8 : 8mm R10: 10mm	LTP : Push-Pull LD : TTL Linedriver HLD: HTL Linedriver	4 ... 512 ppr.	Z: A,B,Z B: A,B	V1: 5 VDC V2: 8-24 VDC	2M5: 2,5 meter cable 5M : 5 meter cable 8M : 8 meter cable 10M: 10 meter cable	R: Radial A: Axial