

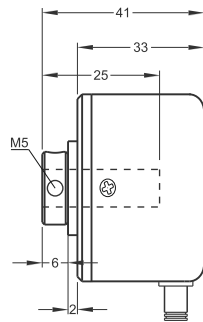
## Optic Rotary Incremental Encoder

- 40 mm case diameter
- 100 - 200 - 250 - 300 - 360 - 400 - 500, 512 - 600 - 1000 - 1024 - 1250 ppr.
- Push-Pull, TTL Linedriver and HTL Linedriver outputs
- Shaft diameter 6 - 8 mm
- 3500 rpm max.

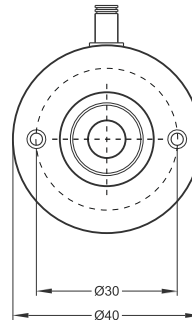


### Technical Specifications

|                                       |   |
|---------------------------------------|---|
| Resolution                            | 100 to 1250 ppr.  |
| Output Channels                       | A,B,Z or A,Ā, B,Ā, Z,Z̄   |
| Output Type                           | Push-Pull, TTL Linedriver, HTL Linedriver   |
| Supply Voltage                        | 5 VDC, 8 - 24 VDC or 5 - 24 VDC   |
| Power Consumption (without load)      | < 40 mA (24 VDC)  |
| Cable                                 | 1.5m (standard) 5 wire + Shield (Push-Pull)<br>1.5m (standard) 8 wire + Shield (Linedriver) |
| Max. Permissible Shaft Loading Radial | 80 N  |
| Max. Speed                            | 3500 rpm  |
| Shaft Diameter                        | Ø6 - 8 mm   |
| Shaft Material                        | Stainless steel   |
| Case Diameter                         | Ø40 mm  |
| Case Material                         | Aluminium and painted steel   |
| IP Degree                             | IP 54   |
| Operating Temperature                 | -20°C ... +80°C   |
| Storage Temperature                   | -30°C ... +90°C   |



Shaft type / Radial



#### Push-Pull Cable Output

+V : Brown  
0V : White  
GND: Shield  
Ch A : Yellow  
Ch B : Green  
Ch Z : Gray

#### TTL - HTL Linedriver Cable Output

+V : Brown  
0V : White  
GND : Shield  
Ch A : Yellow  
Ch B : Green  
Ch Z : Gray  
Ch A inv.: Blue  
Ch B inv.: Red  
Ch Z inv.: Pink

| Model         | Case Diameter | Case Type       | Shaft Diameter     | Output Type  | Resolution        | Output Channels                  | Supply Voltage                            | Connector / Cable                          | Cable Output |
|---------------|---------------|-----------------|--------------------|--|-------------------|----------------------------------|---|--|--------------|
| (example) PRI | 40            | SH              | R6                 | HLD  | 1250              | Z                                | V2  | 2M5  | R            |
| PRI           | 40mm          | SH: Semi hollow | R6: 6mm<br>R8: 8mm | LTP : Push-Pull<br>LD :TTL Linedriver<br>HLD: HTL Linedriver | 100 ... 1250 ppr. | Z :A,B,Z<br>B :A,Ā<br>ZZ: Ā,Ā,Z̄ | V1: 5 VDC<br>V2: 8-24 VDC<br>V3: 5-24 VDC | 2M5: 2,5 meter cable<br>5M : 5 meter cable | R: Radial    |