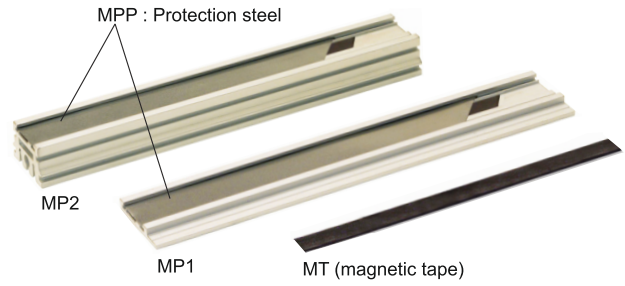


# MT2, MT5 MP1, MP2

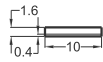
## Magnetic Tape and Aluminium Profile

- 2 or 5 mm pole pitches
- $\pm 40\mu\text{m}$ , accuracy
- Self adhesive magnetic tapes
- Industrial standart dimensions 10 mm x 1,5 mm
- IP 67 protection



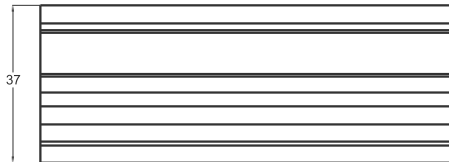
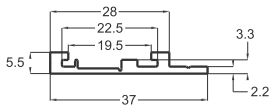
### Magnetic tape technical specifications

Pole pitch	2 mm, 5 mm
Accuracy	$\pm 40\mu\text{m}$
Dimensions	10 mm x 1,5 mm
Max. stroke	Up to 50 m single piece
Cover strip	Stainless steel
Mechanical fixing	Self adhesive
IP degree	IP 67
Operating temperature	-20°C ... +80°C
Storage temperature	-30°C ... +90°C



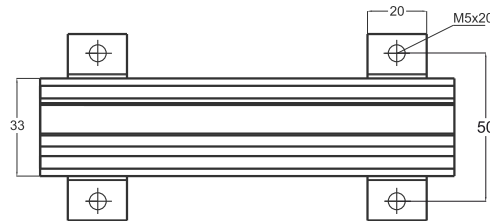
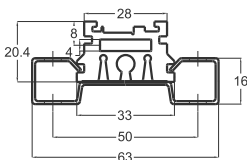
MT (magnetic tape)

Pole pitches	A (mm)	B (mm)	L
MT 2	2	2	Up to 50m single piece. Longer stroke on request
MT 5	5	5	



MP1 Aluminium profile

Model	Length
(example) MTP	2M
MTP (protection steel)	2M: 2 meter (Up to 50 meters)



MP2 Aluminium profile

Model	Length
(example) MPP	2M
MPP (protection steel)	2M: 2 meter (Up to 50 meters)

Model	Length
(example) MP1	2M
MP1 MP2	2M: 2 meter (Up to 3 meters)

Model	Pole pitches	Accuracy	Length (meter)
(example) MT	5	A40	5M
MT (magnetic tape)	2: 2 mm 5: 5 mm	A10: $\pm 10\mu\text{m}$ A20: $\pm 20\mu\text{m}$ A40: $\pm 40\mu\text{m}$	5M: 5 meter (Up to 50 meters)