

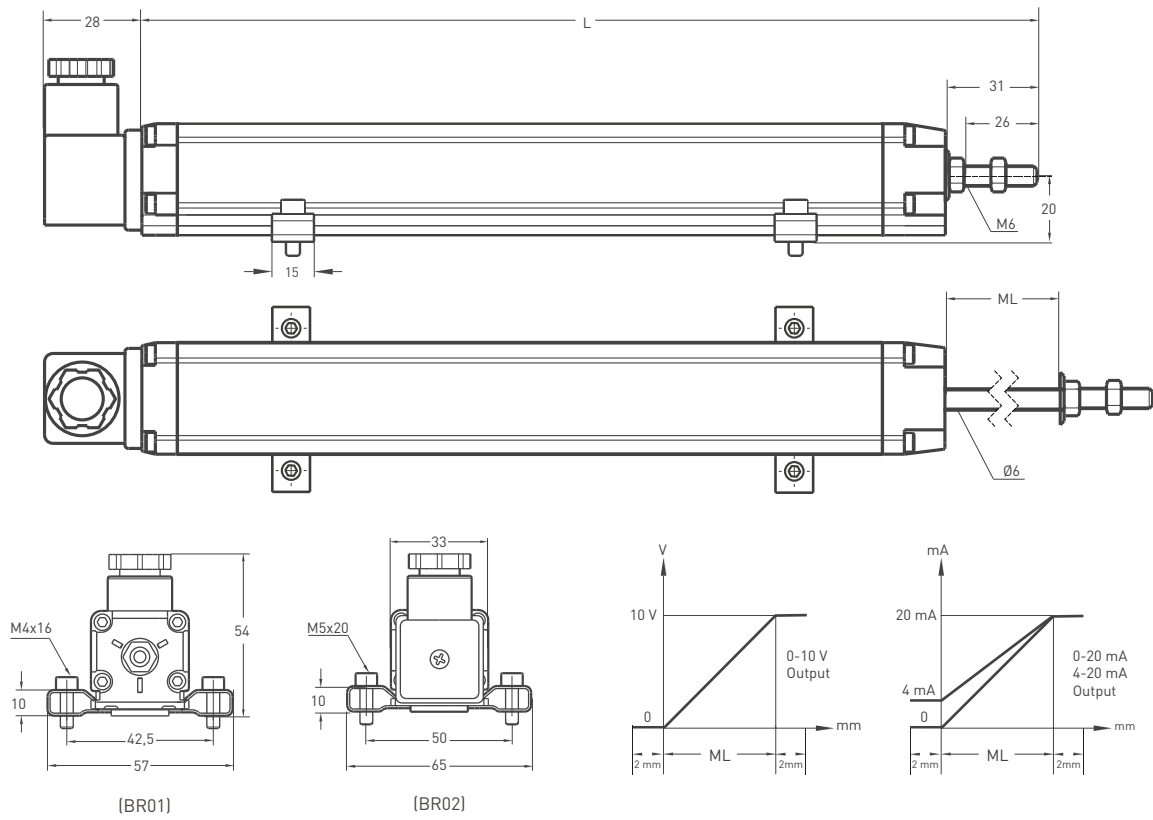
Magnetostrictive position sensor

- Excelent movement with rot design
- Measuring range 100 - 1000 mm
- 16 bit resolution
- Single - double output options



Technical specifications	
Measurement stroke	100 to 1000 mm
Resolution	16 bit DAC output
Repeatability	±0,005% (full scale)
Output	0-10V, 10-0V, 0-10V/10-0V, 10-0V/0-10V, 0-20mA, 20-0mA, 0-20mA/20-0mA, 20-0mA/0-20mA, 4-20mA, 20-4mA, 4-20mA/20-4mA, 20-4mA/4-20mA
Power supply	24 V DC ±10%
Speed	< 10 m/s
Update time	(0-600mm, 0,5ms) , (601-1000mm, 1ms)
Max. consumption	50 mA - 90 mA (depending on stroke length)
Max. output noise	< 5 mVpp
Max. output value	10,5 V
Linearity	±0,05% full scale (min. 100 µm)
Reverse polarity protection	Yes, Up to [-30 VDC]
Overvoltage protection	Yes, Up to [30 VDC]
Case dimensions	33 mm x 33 mm
Case material	Anodized aluminium
Rod material	Stainless steel
Rod diameter	Ø6 mm
Mechanical fixing	Variable brackets
Protection level	IP 65 - EN 60529
Operating temperature	-10°C ... +70°C
Storage temperature	-30°C ... +90°C

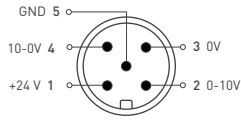
Mechanical specifications



MSR [mm]	100	150	200	250	300	350	400	450	500	550	600	650	700	750	800	850	900	1000
ML (Measuring Length)	100	150	200	250	300	350	400	450	500	550	600	650	700	750	800	850	900	1000
L (Total Length)	311	361	411	461	511	561	611	661	711	761	811	861	911	961	1011	1061	1111	1211

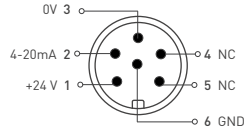
Round Connector

5 pin Connector configuration



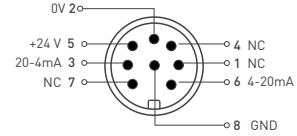
CN5 M12 (A) / M16 (B)
5 pin

6 pin Connector configuration

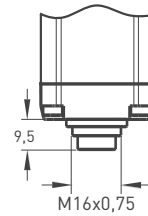
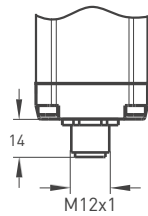


CN6 M12 (A) / M16 (B)
6 pin

8 pin Connector configuration

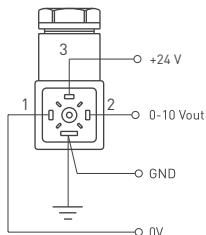


CN8 M12 (A) / M16 (B)
8 pin



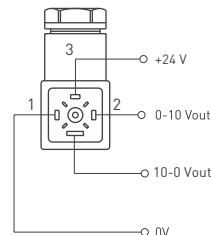
Hydraulic Type Connector

CH1



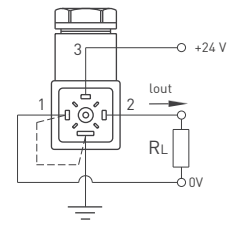
0-10V or 10-0V Output

CH1



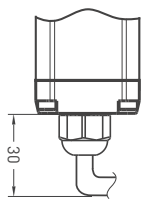
0-10V / 10-0V Output

CH1



0-20mA or 4-20mA Output

Cable



Voltage Output

+V : Brown
0V : Blue
0V sense : Black
Output 1 : White (0-10V)
Output 2 : Orange (10-0V)
Earth : Shield

Current Output

+V : Brown
0V : Blue
0V sense : Black
Output 1 : White (4-20mA)
Output 2 : Orange (20-4mA)
Earth : Shield

Cable Length

1M : 1meter (standard)
(Different cable lengths available)

Ordering Procedure

Model	Measurement stroke	Resolution	Output	Bracket	Connector / Cable	
MSR	300	A	V10	BR02	CH1	
MSR	100 ... 1000 mm	A: 16 bit B: 12 bit	V10: 0-10 V V01: 10-0 V V11: 0-10 V/10-0V V12: 10-0 / 0-10 I04 : 20-4 mA I02 : 20-0 mA	I40 : 4-20 mA I41 : 4-20 mA /20-4mA I42 : 20-4 mA /4-20mA I20 : 0-20 mA I21 : 0-20 mA / 20-0mA I22 : 20-0 mA / 0-20 mA	BR01 BR02	CH2: Hydraulic type (small) CN5A: M12 CN5B: M16 CN6A: M12 CN6B: M16 CN8A: M12 CN8B: M16 1M:1meter 2M5:2,5 meters